

## PREPRINT

*Author-formatted, not peer-reviewed document posted on 08/02/2023*

DOI: <https://doi.org/10.3897/arphapreprints.e101097>

# Fertility Pattern and Differential in India

**Konita Basumatary**

## **Fertility Pattern and Differential in India**

### **Abstract**

The study attempt to study fertility Pattern and Differential in India considering the background characteristics including different Caste, educational level, wealth index, mortality rates, and religious groups, and also to determine factors affecting them. For the study the data used are from the five rounds of the National Family Health Survey such as NFHS-1 (1992-93), NFHS-2 (1998-99), NFHS-3 (2005-06), NFHS-4 (2015-16) and NFHS-5 (2019-21). The data are collected from the twenty-five states in which the factors such as total fertility rate, residence, education, religion, caste, and wealth index were taken from background characteristics of NFHS-2 to NFHS-5 whereas the missing data in between and for NFHS-1 (1992-93) are obtained through interpolation. Thus, the data is balanced panel data, the panel data regression model is used to determine the factors that influence the fertility pattern and differential using Eviews 12 software. The study found fertility differential among caste, religion, wealth index, mortality index, educational level, and residence. And the fertility differential is found to be affected by contraceptive use, birth order, age at first marriage, birth interval, unmet need for family planning, and sex preference among the couples.

Keywords: Fertility, Fertility, Urban, rural, religion, socioeconomic

### **Introduction**

India is a multifaceted developing nation with several ethnicities, traditions, social conventions, and economical environments. After post-independence, the country's population growth rate has accelerated alarmingly with a total population of 1210 million as per the Indian census 2011, negatively affecting every area of economic development where poverty, unemployment, poor health, and environmental degradation are the main issues (Som K. , 2018). After the 1950s, due to western industrialization, urbanization, and socio-economic development, there is advancement in medical sciences and the adoption of public health measures in developing nations which declined the mortality rates (Devi A. T., 2013) but no decline in the fertility rates. This increase in fertility level has become a vital topic for many demographers and policymakers. India launched the family planning program in 1952 (Gogoi, 2018a) and came

into effect in 1960. Since then, the developing countries like India, the fertility rate began to fall and it continued over the next decades (Roy S. , 2017).

Fertility is a process for the biological continuation of human civilization (Devi A. T., 2013) and is defined as the total number of live births produced during their reproductive lives (Singh P. , 2019). The child-bearing age cohort of women is considered to be 15-49 years. Fertility levels determine the age structure of the population, which in turn governs the social, economic, and demographic characteristics of the population (Hassan, 2020).

### **Theoretical Framework of Fertility Differential**

Social scientists and demographers had search for systematic theories of fertility that would explain the differences in fertility and changes in fertility levels. Some of the theories that explain fertility are biological theories, social or cultural theories, economic theories, and socioeconomic theories. The biological theories are those which consider the law regulating the human population to be the same as that which regulates the growth of plants and animals (Spencer, 2017). This includes the density and diet principles (Doubleday, 2010). Malthus, while contributing to population theory, made a principle of fertility that fertility varies inversely with the density of population (Malthus, 1826, ). Again, according to Sadler's theory, increasing density decreases fertility and increases mortality, this, in turn, increases fertility (Sadler, 2013). Thomas Doubleday in 1841 propounded *the true law of population* that explains the relationship between population growth and the diet of the people. According to him, poverty stimulates population growth, as a diet of the poor is insufficient (Doubleday, 2010). Another explanation is the biological theory of fertility propounded by Corrado Gini. This theory explains the basic factors of population growth characterized by biological change rather than social and economic change. According to Gini, the decline in fertility is due to a decline in fecundity (Gini & Felice Vinci, 2016).

The social theory includes social capillarity and cultural lag. Social theories stated that Human volition has an important role in declining fertility. Arsene Dumont, a French philosopher states that one has the urge to rise in the social state or scale. He has compared this urge to the inevitable physical law of nature the force of capillarity (Dumont, 1890). According to the cultural lag theory of fertility differentials, in countries where fertility has been declining, attitudes and practices conducive to diminishing fertility have been adopted first by the better-

educated, wealthier, and socially more favored groups and transmitted in course of time to the intermediate and lower status group. According to this theory birth control especially contraception has been a recent development and has been introduced lately in human culture (Newson, Postmes T, & P, 2005) (Sforza & Feldman, 1981). Economic theories propounded by Liebenstein 1957 are based on the assumptions that decisions regarding family size are influenced by economic consideration and the theory is built within the macro-economic framework. Economic variables considered while explaining fertility behavior are a commodity, the utility of children, the cost of children, opportunity cost, shadow price, and demand theory (Leibenstein, 1974) (Libenstein, 1957). Easterlin has provided a more comprehensive theory of fertility which is a combination of sociology and economics of human fertility. According to this theory, as parents are more concerned about the number of grown-up living children rather than the number of births, the principles determinant of fertility operate are through the demand for children, the supply of children, and the costs of fertility regulation (Easterlin, 1961) (Cedric, 2004).

According to the cultural lag theory of fertility differentials, in countries where fertility has been declining, attitudes and practices conducive to diminishing fertility have been adopted first by the better-educated, wealthier, and socially more favored groups and transmitted in course of time to the intermediate and lower status group. According to this theory birth control especially contraception has been a recent development and has been introduced lately in human culture (Newson et al. (2005); Sforza & Feldman, (1981)).

### **Data Sources & Methodology:**

The main objectives of the study are to examine fertility differential considering the background characteristics including different Caste, educational level, wealth index, mortality rates, religious groups and also to determine factors affecting them. For the study, the data used are from the five rounds of the National Family Health Survey such as NFHS-1 (1992-93), NFHS-2 (1998-99), NFHS-3 (2005-06), NFHS-4 (2015-16) and NFHS-5 (2019-21) are designed to collect data for making various demographic estimates, such as fertility, mortality, maternal and child health. The data are collected from the twenty-five states in which the factors such as total fertility rate, residence, education, religion, caste, and wealth index were taken from background characteristics of NFHS-2 to NFHS-5 whereas the missing data in between and for

NFHS-1 (1992-93) are obtained through interpolation. Thus, the data is balanced panel data, the panel data regression model is used to determine the factors that influence the fertility pattern and differential using Eviews 12 software.

Panel data analysis is a statistical method widely used to analyze data that are collected for multiple periods and over the same individuals or entities. The important models for modeling Panel data are Pooled Ordinary Least Square (OLS) , fixed-effect model, random effect model, and feasible Generalized Least Square (FGLS) models (Wooldridge, 2009). However, the three mainly used panel analyses are the independent Pooled OLS regression model, fixed-effect model, and random effect model (Basumatary & Devi, 2022). Pooled panel analysis assumes homogeneity of all sections in a panel data study and does not treat each section differently. There are no unique characteristics of individuals within the measurement set and no universal effects over time in pooled OLS regression. So, the intercept is assumed to be the same for different entities in pooled OLS regression. However, individuality among different cross-sections allows to have its own intercept (the intercept may be different for the cross-sections), and heterogeneity is assumed in the fixed effect model with time-invariant. There are unique attributes of individuals which do not vary across time and are correlated with independent variables. The random effect model known as the variance components model is also a popular technique for modeling panel analysis. This method allows for heterogeneity and is also time-invariant but the individual specific effect is uncorrelated with the independent variables (Adefemi, A. A 2017). The different intercept for different entities in the fixed and random effect model is because of randomness in selecting data, and those differences in intercept are captured by the RE model (Baltagi, 1985).

Before panel regression is conducted, the unit root test is run to check each series for stationarity. The null hypothesis is assumed that it is non-stationary series, while the alternate hypothesis assumed that it is a stationary series. In this context, the data series of states are tested at levels and first differences for stationarity using individual unit root ADF Fisher to conduct a unit root test. Descriptive statistics are used to present the factors such as total fertility rate, residence, education, religion, caste, wealth index, mortality rates, use of any method of contraception, birth order, age at first marriage, birth interval, unmet need for family planning and sex preference which are included in the analysis.

The Lagrange Multiplier, Chow and Hausman tests were conducted to determine an appropriate model. Firstly, the pooled least square is run and then the Lagrange multiplier test such as the Breusch-Pagan LM test is done to check a suitable model between the pooled least square and random effect model where the null hypothesis of the Breusch-Pagan LM test assumed the absence of a random effect while the alternative hypothesis expresses the presence of a random effect. Here, the null hypothesis will be rejected when  $p < 0.05$  and accept when  $p > 0.05$  at a 5% level of significance. If it rejects the null hypothesis, a further fixed effect model is run and then the chow test (Likelihood Test) is done to check an appropriate model between the pooled least square and fixed effect model where assumed the null hypothesis assumed the absence of a fixed effect while the alternative hypothesis assumed the presence of a random effect. Furthermore, a random effect model is run, if it rejects the null hypothesis and then the Hausman test is done to check between the random effect and fixed effect models where the null hypothesis shows the presence of a random effect whereas the alternative hypothesis expresses the absence of a fixed effect. Here, the null hypothesis will be rejected when  $p < 0.05$  and accept when  $p > 0.05$  i.e. at a 5% level of significance. If the test accepts the null hypothesis then the random effect model will be accepted as a suitable model whereas, if the test rejects the null hypothesis then the fixed effect model will be taken as the best model for the estimation.

Furthermore, tests such as autocorrelation and multicollinearity test were done to find statistical support in the panel data regression.

### Model to be estimated

Model 1: Fertility differential amongst residence (rural, urban), education level (No education, Middle school, High school & above)) and religion (hindu , muslim), random effect model is found better suited. Here the slope/coefficient of various variables are examined to know the fertility differential

The random effect model for residence, education and religion is

$$Y_{it} = \alpha + \beta_1 X_{1it} + \beta_2 X_{2it} + \beta_3 X_{3it} + \beta_4 X_{4it} + \beta_5 X_{5it} + \beta_6 X_{6it} + \beta_7 X_{7it} + (\alpha_i - \alpha) + \varepsilon_{it} \quad (1)$$

Where  $Y_{it}$  = *Total Fertility Rate*<sub>it</sub> is the Dependent variable; i = states & t = time

$X_{1it}$ (Rural),  $X_{2it}$ (urban),  $X_{3it}$ (No education),  $X_{4it}$ (Middle education),  $X_{5it}$ (High school & above),  $X_{6it}$ (Hindu),  $X_{7it}$ ( Muslim) are the Independent variables.

$\beta_1, \beta_2, \beta_3, \beta_4, \beta_5, \beta_6$  &  $\beta_7$  are the coefficients of the independent variables.  $\varepsilon_{it}$  is the error term.

$\alpha$  is the values of the specific state  $i$  and captures the state effect.

Model 2 Fertility differential amongst different caste ( scheduled caste, scheduled tribes, other backward class), wealth (low wealth, medium wealth, high wealth) and mortality (infant mortality and child mortality), here fixed effect model is found better suited.

The fixed effect model is

$$Y_{it} = \alpha_i + \beta_1 X_{SCit} + \beta_2 X_{STit} + \beta_3 X_{OBCit} + \beta_4 X_{LWit} + \beta_5 X_{MWit} + \beta_6 X_{HWit} + \beta_7 X_{IMit} + \beta_8 X_{CMit} + \varepsilon_{it} \quad - (2)$$

Where  $Y_{it}$  = *Total Fertility Rate* <sub>$it$</sub>  is the Dependent variable;  $i$  = states &  $t$  = time

$X_{SCit}$  (Scheduled Caste),  $X_{STit}$  (Scheduled Tribe),  $X_{OBCit}$  (Other Backward Class),  $X_{LWit}$  (Low wealth),  $X_{MWit}$  (Medium wealth),  $X_{HWit}$  (High wealth),  $X_{IMit}$  (Infant Mortality),  $X_{CMit}$  (Child Mortality) are independent variables.

$\beta_1, \beta_2, \beta_3, \beta_4, \beta_5, \beta_6, \beta_7$  &  $\beta_8$  are the coefficients of the independent variables.  $\varepsilon_{it}$  is the error term.

$\alpha_i$  is the values of the specific state  $i$  and captures the state effect.

Model 3 Factors determining the fertility differential, here the fixed effect model is found best suited.

The fixed effect model is:

$$Y_{it} = \alpha_i + \beta_1 X_{1it} + \beta_2 X_{2it} + \beta_3 X_{3it} + \beta_4 X_{4it} + \beta_5 X_{5it} + \beta_6 X_{6it} + \beta_7 X_{7it} + \beta_8 X_{8it} + \dots + \beta_{13} X_{13it} + \varepsilon_{it} \quad - (3)$$

Where  $Y_{it}$  = *Total Fertility Rate* <sub>$it$</sub>  is the Dependent variable;  $i$  = states &  $t$  = time  
 $X_{1it}$  (Any Method of Contraception),  $X_{2it}$  (First Birth order),  $X_{3it}$  (Second Birth order),  $X_{4it}$  (Third Birth order),  $X_{5it}$  (Fourth Birth order),  $X_{6it}$  (Median age at first marriage from 25 to 49),  $X_{7it}$  (Since the preceding birth interval of the median number of the month),  $X_{8it}$  (Unmet need for spacing),  $X_{9it}$  (Unmet need for limiting),  $X_{10it}$  (Want more sons than daughters),  $X_{11it}$  (Want more daughters than sons),  $X_{12it}$  (Want at least one son) &  $X_{13it}$  (Want at least one daughter) are Independent variables.

$\beta_1, \beta_2, \beta_3, \beta_4, \beta_5, \beta_6, \beta_7, \beta_8, \beta_9, \beta_{10}, \beta_{11}, \beta_{12}$  &  $\beta_{13}$  are the coefficients of the independent variables

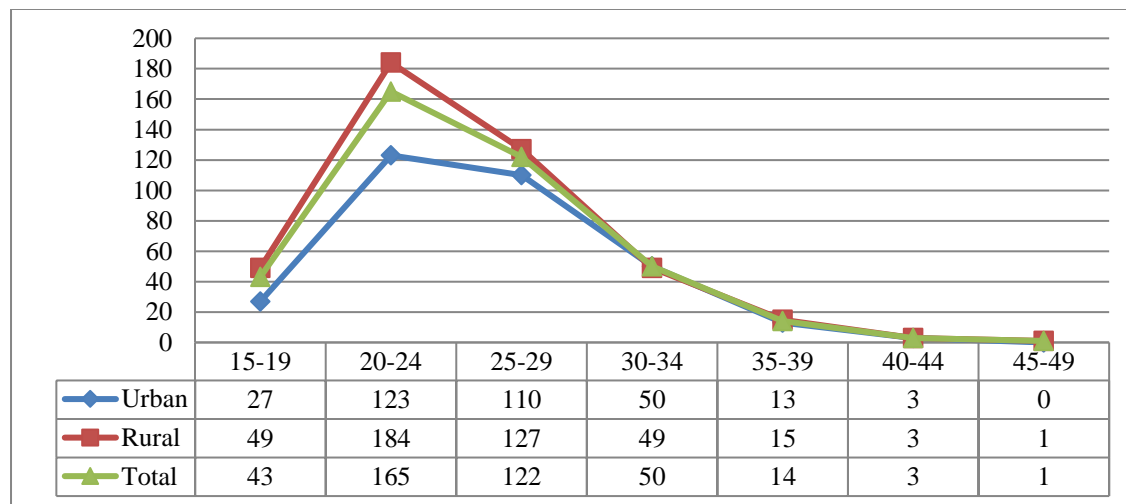
$\varepsilon_{it}$  is the error term.  $\alpha_i$  is the values of the specific state  $i$  and captures the state effect.

## Discussion:

## The fertility pattern and differential of India:

The Age-Specific Fertility Rates (ASFR), the Total Fertility Rates (TFR), and the Crude Birth Rates (CBR) by the residents of India are shown in table 1 (Appendix-II) from NFHS-2 to NFHS-5. It is seen from the table that the ASFR of India is higher in rural as compared to urban areas in respective age groups but continuously declining both in rural and urban areas during the periods. Since the child-bearing period of women is from 15 to 49 years and it is observed that the fertility rate is different for the different age groups. It is highest in the age group 20-24 years, starts declining after 30-34 years, and is nearly zero in the age group 45-49. The percentage change in ASFR during the period NFHS-2 to NFHS-5 illustrates that the decline in fertility is more in urban than in rural areas in the age group 15-19, and 20-24. A decline of 100 percent in fertility in the age group 45-49 years is depicted in urban areas and 75 percent in rural areas.

Figure 1: Age-specific Fertility Rate of India from age group 15-19 to 45-49 years.



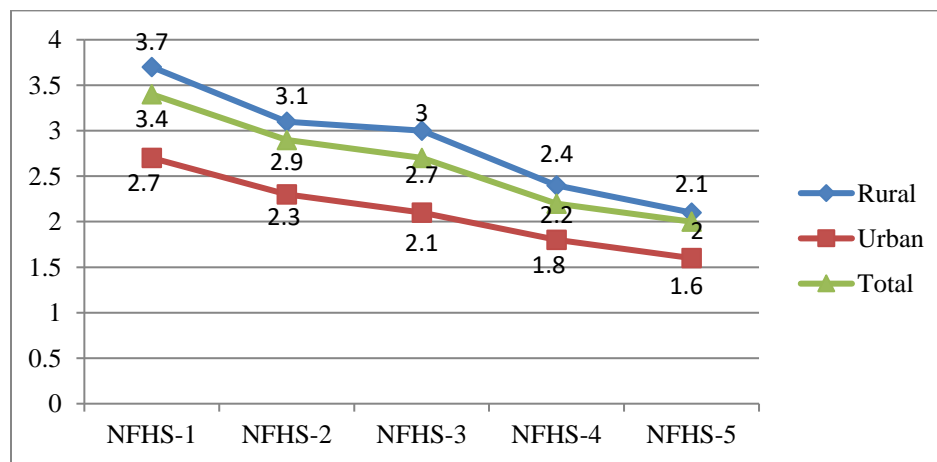
**Source:** National Family Health Survey-5, 2019-21.

It is observed from figure1 that the Age-specific fertility rate (ASFR) follows a pattern among women with rates starting from very low in the very young age group 15-19, rising peak at the age group 20-24, and then gradually declining thereafter until it reaches zero at the age group 45-49. Again, the ASFR of the rural population shows a higher peak than the ASFR of the urban population. Slight variations in the pattern occur depending on differences in age at first marriage, level of contraceptive prevalence, desired family size, the status of women in society, level of participation of women in out-of-home employment, and many other factors that



influence childbearing in a society (Kapoor, K.Kshatriya, Vijeta, & Kapoor, 2015). Usually, the age pattern of fertility follows a bell-shaped curve though the shape of this bell varies from one population to another depending on factors such as the age of women at marriage, the level of physiological sterility, the proportion of marriage person, the incidence of widowhood and separation, customs about lactation and post-partum abstinence, the level of contraceptive and other (Balasubramanian, 1980). The TFR of all of India which was 3.39 children per woman in 1992-93 has declined to 2.85 in 1996-98, 2.68 in 2005-06, 2.18 in 2015-16, and 1.99 in 2019-21 as depicted in table 1 (Appendix-II). Again, the TFR of India shows the fertility decline in both the rural and urban areas, the fertility rate was 2.70 in urban and 3.67 in rural areas in 1992-93, 2.27 in urban and 3.07 in rural areas in 1996-98 to 1.63 in urban and 2.14 in rural areas in 2019-21, which make a difference of 39.6 percent in urban and 41.7 percent in rural areas. The women in all-India on average give birth to two children (1.99) in 2019-21 as compared to three children (2.85) in 1996-98, which have a difference of about 41.3 percent.

Figure 2: Pattern of Total Fertility Rate (TFR) of India.



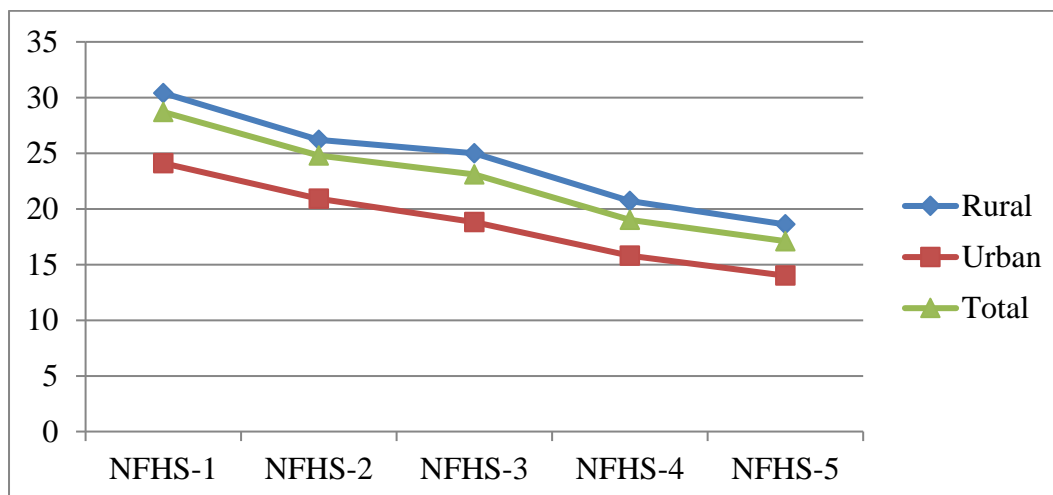
**Source:** National Family Health Survey (NFHS), 1992-93 to 2019-21.

Figure 2 depicts the pattern of the Total Fertility Rate from NFHS-1 to NFHS-5. Initially, the peak of TFR in all of India was slightly high and then starts declining afterward. Similarly, the peak of TFR in rural and urban areas was slightly high and declined afterward. Again, it also shows that the TFR for the rural population is higher as compared to the urban population.

Table 1 (Appendix-II) also shows the decline in Crude Birth Rate (CBR) from 28.7 in 1992-93 to 17.1 in 2019-21. The CBR is also seen as declining in both rural and urban areas but the rate is

higher in rural than urban areas. The CBR of India was 28.7 in 1992-93 and 17.1 in 2019-21, which makes a difference of 40.4 percent. On the contrary, the CBR in rural and urban was 30.4 and 24.1 in 1992-93 whereas 18.6 and 14 in 2019-21, having a difference of about 38.8 and 41.9 percent in both areas.

Figure 3: The Crude Birth Rate of India.



**Source:** National Family Health survey, 1992-93 to 2019-21.

The differential in fertility is determined by background characteristics like a place of residence, years of schooling, religion, caste/tribe, and wealth which is shown in table 2 (Appendix-III).

TFR for respective periods decreases as years of schooling increase as depicted in table 2 (Appendix-III). In countries like India, the relationship between fertility and education is not simple. Many studies had found a negative relationship between the number of children ever

born and the educational attainment of women (Som & Mishra, 2020). Religion affects the fertility rate of an individual where the TFR is observed more for Muslims, followed by Hindus and Christians and TFR is lowest for Jainism from NFHS-2 to NFHS-5. Caste wise the TFR is highest in Scheduled caste (3.15) in NFHS-2 and Scheduled tribe (3.12) in NFHS-3, (2.48) in NFHS-4, and (2.09) in NFHS-5, followed by other backward classes. Fertility differential also arises due to the differences in wealth as shown in the table where the lower the wealth index, the higher the total fertility rate and vice versa. However, many studies had found a negative relationship between the educational attainment of a wife and the number of children ever born (Rele, 1976). Religion also affects the fertility rate of an individual. TFR (NFHS-4) is observed more for Muslims (2.62), followed by Hindus (2.13), and Christians (1.99), and the lowest total fertility rate is observed for Jainism. Furthermore, (Visaria L. , 1974) states that the average number of children born alive to women who had completed their fertility was 6.4 for Hindus and 7.0 for Muslims. However, although Muslim exhibit higher fertility, the Hindu-Muslim fertility differences were small. One of the important institutional factors responsible for depressing the fertility of Hindus in the past had been the low incidence of widow remarriage (Balasubramanian, 1980). In India, there is a social ban on the remarriage of Hindu widows, particularly among the upper class. Caste-wise total fertility is highest for the scheduled tribe (2.48), followed by scheduled caste (2.26) and other backward classes (2.22). The fertility differential is also due to the differences in wealth, that is, the higher the wealth index, the lower the total fertility rate as shown in table 2 in appendix.

## Results

### Test of stationarity/Panel Unit Root Test:

The unit root test is conducted to check each series for stationarity. The null hypothesis is assumed that it is non-stationary series, while the alternate hypothesis assumed that it is a stationary series. In this context, the data series of states are tested at levels and first differences for stationarity using individual unit root ADF Fisher to conduct a unit root test. According to the results shown in table 1, the tests suggest that all the individual series except total fertility rate, no education, primary education and high school level or above education, infant mortality rate, child mortality rate, any method of contraception, unmet need for spacing, want more sons than daughters, want more daughters than sons, want at least one daughter accept the null hypothesis

at level ( $p > 0.05$ ) which is non-stationary and further it appears to be stationary at first difference, I(1) processes.

Table 1 Results of stationarity test

Panel Unit Root Test					
Method: ADF Fisher Unit Root Test					
Variables		Stationary at level		Stationary at the single difference	
		Statistic	Prob.	Statistic	Prob.
TFR (Total Fertility Rate)		89.9	0.0004	NA	NA
RESIDENCE	Rural	59.7	0.1628	104.5	0.0000
	Urban	65.4	0.0706	94.4	0.0001
EDUCATION	No education (illiterate)	99.6	0.0000	NA	NA
	Primary level	148.2	0.0000	NA	NA
	High school or above level	141.5	0.0000	NA	NA
RELIGION	Hindu	31.6	0.9798	83.3	0.0021
	Muslim	27.1	0.9783	63.6	0.0101
CASTE	SC	30.7	0.9854	84.4	0.0017
	ST	50.03	0.472	86.7	0.0010
	OBC	35.3	0.9416	81.3	0.0034
WEALTH INDEX	Low wealth index	41.3	0.8021	144.2	0.0000
	Medium wealth index	34.8	0.9487	119.5	0.0000
	High wealth index	41.2	0.8051	82.5	0.0026
MORTALITY RATES	Infant mortality rate	103.6	0.0000	NA	NA
	Child mortality rate	71.6	0.0239	NA	NA
CONTRACEPTIVE USE	Any method of contraception	67.4	0.05	NA	NA
BIRTH ORDER	First Birth Order	28.9	0.9926	108.3	0.0000
	Second Birth Order	32.7	0.972	94.2	0.0002
	Third Birth Order	52.6	0.3737	155.8	0.0000
	Fourth or more Birth Order	41.6	0.7921	86.1	0.0011
AGE AT FIRST MARRIAGE	Median age at first marriage (25-49 years)	42.2	0.7734	68.7	0.0405
BIRTH INTERVAL	The median number of birth interval	31.4	0.9815	73.2	0.0176
UNMET NEED FOR FAMILY PLANNING	Unmet need for spacing	96.5	0.0001	NA	NA
	Unmet need for limiting	63.04	0.1018	77.1	0.0082
SEX PREFERENCE	Want more sons than daughters	82.1	0.0028	NA	NA
	Want more daughters than sons	69.1	0.0378	NA	NA
	Want at least one son	65.1	0.0738	79.8	0.0046
	Want at least one daughter	70.03	0.0322	NA	NA

\* NA – Not Applicable.

Here, the stationarity of variables such as fertility rate, residence, education, religion, caste, wealth index, mortality rates, contraceptive use, birth order, age at first marriage, birth interval, unmet need for family planning and sex preference is examined. Each variable except fertility rate, contraceptive use, age at first marriage and birth interval are categorized in the following ways: residence – Rural and Urban, education – No education, Primary level and High School & above level, religion – Hindu and Muslim, caste – SC, ST and OBC, wealth index – low wealth, medium wealth and high wealth, mortality rates – Infant mortality and Child mortality rates,

birth order – First birth order, Second birth order, Third birth order and Fourth or more birth order, unmet need for family planning - Unmet need for spacing and Unmet need for limiting, sex preference – Want more sons than daughters, Want more daughters than sons, Want at least one son and Want at least one daughter.

Tables 2 and 3 present the descriptive statistics of the given variables in terms of their mean, median, standard deviation, skewness, Kurtosis, Jarque-Bera, probability, sum, sum square deviation, and minimum and maximum values.

Table 2: Descriptive statistics for dependent and independent variables

	Variables							
	TFR	Rural	Urban	No education	Primary education	High school level and above	Hindu	Muslim
Mean	2.5	2.6	1.9	3.2	2.7	1.8	2.08	2.7
Median	2.3	2.5	1.8	3.1	2.5	1.8	2	2.5
Maximum	4.8	5.2	3.1	7.8	7.3	4.8	3.9	6
Minimum	1.1	1.2	1	0.4	1	1	0.8	1.1
Std.Dev.	0.7	0.7	0.4	1.1	1	0.5	0.5	0.8
Skewness	0.8	0.7	0.5	1	1.6	2.1	0.8	1
Kurtosis	2.9	3.07	2.5	5.8	7.4	10.6	4.3	4.3
Jarque-Bera	13.8	11.03	6.4	63.2	161.9	398.1	25.6	31.8
Probability	0.0009	0.004	0.03	0.000	0.000	0.000	0.000003	0.000
Sum	312.7	327.7	244.6	405.1	343.5	235.1	260	338.9
Sum Sq. Dev.	76.5	74.1	25.9	157.4	129.5	36.7	42.1	91.7
Observations	125	125	125	125	125	125	125	125

Table 3 Descriptive statistics of dependent and independent variables

Variables	Mean	Median	Maximum	Minimum	Std.Dev.	Skewness	Kurtosis	Jarque-Bera	Probability	Sum	Sum Sq. Dev.	Obs.
TFR	2.5	2.3	4.8	1.1	0.7	0.8	2.9	13.8	0.0009	312.7	76.5	125
SC	2.2	2.1	4.8	1.1	0.7	1.3	4.9	57.1	0.0000	280.6	62.9	125
ST	2.5	2.4	6.3	1	0.8	1.4	6.1	92.5	0.0000	323.4	84.6	125
OBC	2.1	2	5.3	1	0.7	1.2	5.6	71.7	0.0000	266.2	64.5	125
Low wealth index	3.5	3.4	6	1.7	0.9	0.3	2.4	3.8	0.14	440.7	105.3	125
Medium wealth index	2.7	2.6	4.6	1.6	0.6	0.5	2.6	7.7	0.02	338.3	53.09	125
High wealth index	1.8	1.8	3.5	1	0.3	0.8	5.7	54.2	0.0000	228.2	16.8	125
Infant mortality rate	43.4	37.9	111	4.4	22.6	0.7	3.2	11.7	0.002	5425.9	63348.8	125
Child mortality rate	15.4	10.8	59.8	0	12.2	1.2	4.5	47.6	0.0000	1932.4	18582.7	125
Any method of contraception	51.9	55.9	75.8	13	15.5	-0.5	2.3	9.6	0.007	6488.7	30069.6	125
First Birth Order	35.7	35.8	59.4	19.8	8.7	0.3	2.3	4.01	0.13	4466.9	9481.3	125
Second Birth Order	29.3	29.3	43.3	19	5.7	0.19	2.3	3.08	0.21	3673.1	4130.8	125
Third Birth Order	15.5	15.9	23.2	5.9	3.2	-0.5	3.3	7.6	0.02	1943.8	1344.5	125
Fourth or more Birth Order	18.7	18	46.5	1.3	11.3	0.4	2.1	6.9	0.03	2339.1	15836.2	125
Want more sons than daughters	23.2	22.4	57.6	4.7	12.07	0.5	2.5	7.2	0.02	2901.7	18075.4	125
Want more daughters than sons	4.8	3.4	24.4	0.4	5.08	2.3	7.6	224.7	0.00000	608	3212.5	125
Want at least one son	82.5	84.4	99.5	45.1	10.8	-0.8	3.7	19.4	0.00006	10317	14473.01	125
Want at least one daughter	79.01	79.8	99.3	45.2	10.6	-0.5	3.3	7.8	0.02	9876.7	14129.8	125

Median age at first marriage	18.8	18.8	25	14.5	2.2	0.3	2.8	2.9	0.2	2362.2	624.9	125
The median number of months	33.8	31.7	64.4	27.4	6.4	2.2	9.05	298.2	0.00000	4225	5087.9	125
Unmet need for spacing	7.4	6.8	23.2	2.3	4.1	1.2	5.09	57.9	0.00000	937	2109.8	125
Unmet need for limiting	7.1	6.7	17.4	1.5	3.1	0.7	3.3	12.8	0.001	897.2	1216.8	125

### Result of Multicollinearity test:

The Multicollinearity test for residence, education, religion, caste, wealth index, mortality rates, contraceptive use, birth order, age at first marriage, birth interval, unmet need for family planning and sex preference is done using variance inflation factor (VIF). A VIF should be less than equal to 10. In particular, the Multicollinearity test suggests that there is no Multicollinearity among the variables in the sample of 25 states of India as the VIF of all the variables is less than 10 which is shown in table 4.

Table 4 Results of Multicollinearity Test

Variance Inflation Factors		
	Variable	Centered VIF
RESIDENCE	Rural	3.102449
	Urban	2.678513
EDUCATION	No education (illiterate)	3.268400
	Primary education	2.836016
	High school or above	1.354558
RELIGION	Hindu	2.735976
	Muslim	2.072438
CASTE	Scheduled Caste (SC)	2.082563
	Scheduled Tribe (ST)	2.129688
	Other Backward Class (OBC)	1.486293
WEALTH INDEX	Low wealth index	1.669308
	Medium wealth index	1.922616
	High wealth index	1.721112
MORTALITY RATES	Infant mortality rate	5.158202
	Child mortality rate	6.394873
CONTRACEPTIVE USE	Any method of contraception	4.172720
BIRTH ORDER	First Birth Order	4.119707
	Second Birth Order	2.444350
	Third Birth Order	2.114329
	Fourth or more Birth Order	5.028815
AGE AT FIRST MARRIAGE	Median age at first marriage from age group 25 to 49	1.508525
BIRTH INTERVAL	Since preceding birth interval of median number of month	1.697910
UNMET NEED FOR FAMILY PLANNING	Unmet need for spacing	3.637037
	Unmet need for limiting	1.993648
SEX PREFERENCE	Want more sons than daughters	3.187261
	Want more daughters than sons	1.661151
	Want at least one son	2.663045
	Want at least one daughter	2.579579



The estimation models for Panel data:

To determine an appropriate model for panel data, Lagrange Multiplier, Chow and Hausman tests were done using Eviews 12 software. The Lagrange multiplier test, a test such as the Breusch-Pagan LM test is done as depicted in table 4. The null hypothesis of the Breusch-Pagan LM test shows the absence of a random effect while the alternative hypothesis expresses the presence of a random effect. The results show that all these tests reject the null hypothesis of no random effect ( $p < 0.05$ ) which means the pooled OLS model is not suitable for analysis. Therefore, the Lagrange multiplier test indicates random regression is an appropriate model over pooled OLS model.

Table 5: Results of Lagrange Multiplier Test for Random Effects

Lagrange Multiplier Tests for Random Effects			
Null hypothesis: No effects			
Alternative hypothesis: Two-sided (Breusch-Pagan) and one-sided (all others) alternatives			
Test hypothesis			
<b>RESIDENCE, EDUCATION &amp; RELIGION</b>			
Test	Cross-section	Time	Both
Breusch-Pagan	12.13148(0.0005)	0.226894(0.6338)	12.35838(0.0004)
<b>CASTE, WEALTH &amp; MORTALITY RATES</b>			
Test	Cross-section	Time	Both
Breusch-Pagan	55.44799(0.0000)	0.223163(0.6366)	55.67116(0.0000)
<b>CONTRACEPTIVE USE, BIRTH ORDER, AGE AT FIRST MARRIAGE, BIRTH INTERVAL, UNMET NEED FOR FAMILY PLANNING &amp; SEX PREFERENCE</b>			
Test	Cross-section	Time	Both
Breusch-Pagan	5.873457(0.0154)	16.24429(0.0001)	22.11775(0.0000)

Further, to determine a suitable model between the Pooled Effect Model and the Fixed Effect Model, the chow test (Likelihood Test) was performed. The results show that the probability value of the cross-section effect is less than a 5% level of significance as it rejects the null hypothesis of pooled OLS and accepts the alternative hypothesis of the fixed effect model as shown in table 6. Hence, the fixed effect is an appropriate model over pooled effect for all the given variables.

Table 6: Results of Chow test for Fixed Effects

Redundant Fixed Effects Tests			
Test cross-section fixed effects			
<b>RESIDENCE, EDUCATION &amp; RELIGION</b>			
Effects Test	Statistic	d.f.	Prob.
Cross-section F	2.581491	(24,68)	0.0012
<b>CASTE, WEALTH &amp; MORTALITY RATES</b>			
Effects Test	Statistic	d.f.	Prob.
Cross-section F	10.332472	(24,67)	0.0000

<b>CONTRACEPTIVE USE, BIRTH ORDER, AGE AT FIRST MARRIAGE, BIRTH INTERVAL, UNMET NEED FOR FAMILY PLANNING &amp; SEX PREFERENCE</b>			
<b>Effects Test</b>	<b>Statistic</b>	<b>d.f.</b>	<b>Prob.</b>
Cross-section F	3.145191	(24,62)	0.0002

Furthermore, to identify whether the random effect or fixed effect model is a more suitable model for estimation, the Hausman test is done as shown in table 7. In the Hausman test, the null hypothesis shows the presence of a random effect whereas the alternative hypothesis expresses the absence of a fixed effect. As the probability value of the test statistic is greater than a 5 % level of significance ( $p > 0.05$ ), so the null hypothesis is accepted which implies that the random effect regression is the best model over fixed effect regression for factors such as residence, education and religion. On the other hand, the probability value of test statistics is less than a 5% level of significance ( $p < 0.05$ ) for caste, wealth index, mortality rates, contraceptive use, birth order, birth interval, unmet need for family planning and sex preference. Hence, the alternative hypothesis of fixed effect is accepted which means that the fixed effect regression is the best model for the analysis.

Table 7: Results of the Hausman Test

<b>RESIDENCE, EDUCATION &amp; RELIGION</b>			
<b>Test Summary</b>	<b>Chi-Sq. Statistic</b>	<b>Chi-Sq. d.f.</b>	<b>Prob.</b>
Cross-section random	2.722161	7	0.9095
<b>CASTE, WEALTH &amp; MORTALITY RATES</b>			
<b>Test Summary</b>	<b>Chi-Sq. Statistic</b>	<b>Chi-Sq. d.f.</b>	<b>Prob.</b>
Cross-section random	23.307297	8	0.0030
<b>CONTRACEPTIVE USE, BIRTH ORDER, AGE AT FIRST MARRIAGE, BIRTH INTERVAL, UNMET NEED FOR FAMILY PLANNING &amp; SEX PREFERENCE</b>			
<b>Test Summary</b>	<b>Chi-Sq. Statistic</b>	<b>Chi-Sq. d.f.</b>	<b>Prob.</b>
Cross-section random	22.983362	13	0.0419

:

Table 8 Random Effect Model explaining Fertility differential among Residence, Education and Religion

RANDOM EFFECT MODEL					
Dependent Variable: TFR					
Method: Panel Least Squares					
Cross-sections included: 25					
Total panel (balanced) observations: 100					
Variable		Coefficient	Standard Error	t-statistic	Prob.
C		-0.122062	0.197071	-0.619381	0.5372
RESIDENCE	Rural	0.153751	0.079744	1.928041	0.0569***
	Urban	-0.162595	0.109472	-1.485265	0.1409
EDUCATION	No education (illiterate)	0.401354	0.064909	6.183355	0.0000*
	Primary education	0.244216	0.077679	3.143922	0.0022*
	High school or above education	0.354777	0.103669	3.422202	0.0009*
RELIGION	Hindu	0.578533	0.076337	7.578641	0.0076*
	Muslim	0.125636	0.039131	3.210657	0.6965
R <sup>2</sup>		0.831339			
Durbin- Watson stat.		1.474463			

\* 1% level of significance, \*\* 5% level of significance, \*\*\* 10% level of significance.

#### *Residence and Fertility:*

A rural-urban residence is considered one of the important factors influencing the fertility differential. From the estimated results, it is found that TFR in rural (0.153751) is higher than TFR in urban (-0.162595). This study found that rural women have higher fertility than urban women. Many studies showed a similar rural-urban differential in fertility (Htun & Ard-am, 2015). The rural-urban fertility difference is due to the socio-economic differential between women living in rural areas and urban areas (Qadeer, 2002), that is, rural women are likely to marry at an early age than urban women (Kulkarni (2011); Das et al. (1955); Zarate (1967)). Also, the urban residence has better facilities than the rural which stimulated more likely to use contraceptives (Sisouphanthong et al. 2000; Retherford, Thapa 2003).

#### *Education and Fertility:*

Education is one of the significant socioeconomic factors affecting the differential in fertility. While considering the slope of education level, it is found that TFR is higher for illiterate

(0.401354) followed by high school or above level of education (0.354777). The results indicated that TFR decrease as the education of women increases. Women belonging to the reproductive age group of 15 to 49 years, having higher education had the lowest fertility as compared to women with only primary and no education (IIPS & Macro International, (2007)). This indicates that educated women are more likely to delay entry into marital unions (Reddy, 2003), increase the duration of the childbearing period (Roy & Hossain, 2017), use contraception and have a small family size than uneducated women (Martin, 1995). Education changes the fertility behaviour of women (Bbaale & Mpuga, 2011) which means after attainment of secondary level of education, women are exposed to information, may enjoy greater autonomy to decide about employment and marriage-related issues; and are aware of their reproductive health (Basu, 2002) and the health of their children (Adhikari, 2010). This study has demonstrated that better education can lead to higher productivity, lower fertility and better health status, not only at an individual level but also from a micro-level point of view (Dreze & Murthy, (2001) ; James, (2011)).

#### *Religion and Fertility:*

Religion plays an important role in determining the attitude of people toward limiting fertility. The estimated results show that the TFR of the Hindu religion is higher than Muslim religion but the slope coefficient of Muslim women is not significant. The other studies found that the TFR of the Muslim population is higher compared to the Hindu population (Visaria, (1974); Balasubramanian, (1984); Das & Pandey, (1985); Arokiasamy, (2002); Mari Bhat & Xavier, (2003); (Adhikari, 2010)). This could be due to religious restriction, cultural backwardness and inadequate knowledge and misconceptions about modern family planning methods (Albsoul-Younes et al. (2003)) in most societies which play an important role in the acceptance of or creating resistance to family planning (Pearce, (2001); Mistry, (1995); Adioetomo, (1995); Mulatti, (1995)). In addition, the low level of education among women is one of the major causes of high fertility among Muslims (Quraishi (1996) & Jeffery and Jeffery (2002). Furthermore, high fertility among Muslim women could be due to early age at marriage (Tafforeau, (1990)), high son preference and polygamy which may lead to pregnancy rivalries leading to higher fertility (Shumayla & Kapoor, 2017; Sargent & Cordell (2003).

Table 9 Fixed Effect Model explaining fertility differential among Caste, Wealth and mortality rates

FIXED EFFECT MODEL					
Dependent Variable: TFR					
Method: Panel Least Squares					
Cross-sections included: 25					
Total panel (balanced) observations: 100					
Variable		Coefficient	Standard Error	t-statistic	Prob.
C		1.611092	0.116169	13.86857	0
CASTE	SC	0.001761	0.073444	0.023973	0.9809
	ST	0.165845	0.056809	2.919327	0.0048*
	OBC	0.020171	0.048148	0.418937	0.6766
WEALTH INDEX	Low wealth index	0.018658	0.099005	0.188451	0.8511
	Medium wealth index	0.254648	0.128731	1.978144	0.0520**
	High wealth index	-0.332287	0.139694	-2.378678	0.0202**
MORTALITY RATES	Infant mortality rate	0.015994	0.004197	3.811094	0.0003*
	Child mortality rate	0.006676	0.007225	0.924048	0.3588***
R <sup>2</sup>		0.914109			
Durbin-Watson Stat.		1.884638			

\* 1% level of significance, \*\* 5% level of significance, \*\*\* 10% level of significance.

#### *Caste and Fertility:*

While considering the TFR based caste-wise, it is established that the TFR of ST (0.165845) is higher than the TFR of OBC (0.020171). Women belonging to the ST category had higher fertility than OBC (Nagadeve & Dongardive, 2021) as women living in rural areas have low literacy rates, have son preference, and use contraception only after attaining desired family size (Roy et al., (2015)) and lower use of any modern method (Tharun & Muniswamy, 2022). Higher fertility rates increase health risks and problems belonging to STs/SCs (Wankhede & Paswan, 2011).

#### *Wealth index and Fertility:*

In the wealth index, the slope coefficient of the low wealth index is higher than the high wealth index. Also, the TFR of medium wealth (0.254648) is greater than high wealth (-0.332287). Women aged 25-49 in the highest wealth quintile were married over four years later than women in the lowest wealth quintile (Singh P. , 2019). According to Adhikari (2010), an inverse relationship was observed between wealth status and fertility, with significantly lower fertility among the richest women compared to fertility among the poorest. It could be that poor people perceive children as a source of income which motivates them to have more children (Karki, 1982) and the poorest people have less access to education and family planning methods.

#### *Mortality rates and Fertility:*

The influence of infant and child mortality on fertility is considered one of the most important factors. It is found that the infant mortality rate showed a positive and significant association with TFR. In other words, a one percent increase in the infant mortality rate, on average, results in a 0.015% increase in TFR. On the other hand, a positive but insignificant relationship is examined between child mortality and TFR. When the mortality rate is high, the level of fertility also becomes high as women who had a child-death experience were likely to have a higher number of children than those who had no such experience to ensure the survival of at least a few of them which leads to a higher risk of uncontrolled fertility (Balakrishnan & Mahadevan (1987); Adhikari (2010)). Women who marry at an early age and bear a child also result in a high incidence of infant mortality and deterioration of the mother's health (Khan A. A., 2008). The impact of the high fertility rate on health is mainly reflected in the high rates of maternal & child mortality (Kumar, (2018); Miller, (1989); Miller et al., (1992)).

Table 9: Results of the Fixed Effect Model on factors determining fertility differential

FIXED EFFECT MODEL					
Dependent Variable: TFR					
Method: Panel Least Squares					
Cross-sections included: 25					
Total panel (balanced) observations: 100					
Variable		Coefficient	Standard Error	t-statistic	Prob.
C		1.901719	0.810144	2.347385	0.0221
<b>CONTRACEPTIVE USE</b>	Any method of contraception	0.009345	0.006636	1.408371	0.1640
<b>BIRTH ORDER</b>	First Birth Order	-0.032471	0.014016	-2.316619	0.0238**
	Second Birth Order	-0.007677	0.016971	-0.452344	0.6526
	Third Birth Order	-0.027726	0.017966	-1.543226	0.1279
	Fourth or more Birth Order	-0.009401	0.009557	-0.983629	0.3291
<b>AGE AT FIRST MARRIAGE</b>	Median age at first marriage from age group 25 to 49	0.004761	0.020887	0.22796	0.8204
<b>BIRTH INTERVAL</b>	Since the preceding birth interval of the median number of month	-0.000804	0.014987	-0.053662	0.9574
<b>UNMET NEED FOR FAMILY PLANNING</b>	Unmet need for spacing	0.068188	0.03049	2.236429	0.0289**
	Unmet need for limiting	0.024531	0.01552	1.580597	0.1191
<b>SEX PREFERENCE</b>	Want more sons than daughters	0.035821	0.007451	4.807252	0.0000*
	Want more daughters than sons	-0.059287	0.030207	-1.962717	0.0542***
	Want at least one son	-0.001302	0.006083	-0.214076	0.8312
	Want at least one daughter	-0.011909	0.009324	-1.277255	0.2063
R <sup>2</sup>		0.883332			
Durbin-Watson Stat.		2.328714			

\* 1% level of significance, \*\* 5% level of significance, \*\*\* 10% level of significance.

### *Contraceptive use and Fertility:*

Contraceptive use or family planning method is one of the most important factors which affect fertility directly. The use of any method of contraception is found to have a positive but insignificant effect on the fertility rate. This is because women who use contraception had less number of children than those who did not use contraception. After all, women adopt contraception with the rising level of education (Martin, 1995). Also, the urban residence has better health-related facilities which stimulated more likely to use of contraceptives (Sisouphanthong et al. (2000); Retherford, Thapa (2003)).

### *Birth order and Fertility:*

Among the birth order, the first birth order is found to have a negative as well as significant effect on the fertility rate which means on average, a one percent increase in the first birth order will decline the fertility rate by 0.03%. Moreover, second birth order, third birth order and fourth birth order or more also have a negative but insignificant effect on the fertility rate. It shows a positive relationship between birth order and fertility, that is, women with higher birth order have a greater family size than those with first birth order (Murphy & Knudsen, 2002; Kumar P. , 2018). Children from higher-order births are known to be at greater risk of dying during infancy and early childhood (Mary, (2003); Sadia, (2010); Howell *et al.* (2016)).

### *Age at first marriage and Fertility:*

Age at first marriage is an important proximate determinant influencing fertility (Nyi, 2005). According to the estimation result, the median age at first marriage from 25 to 49 years of age is found to have a positive but insignificant association with the fertility rate. The lower age at first marriage increases the childbearing period and contraceptive use is low (Kabir et al. (2001); Sarkar, (2010)) which, in turn, increases fertility in societies. Many studies conducted in India found a negative relationship that the fertility rate declines and the mean age at marriage increases (Borkotoky & Unisa, (2014); Bharati and Dastidar, (1990); Das and Dey, (1998); Varma et.al, (1999); Khongsdier, (2005), Sahu, (2006); IIPS, (2007)). In addition, it was found that older age at marriage reduces fertility (Coale, (1975); Som & Mishra, (2020); Sibanda et al. (2003); Adioetomo, (1995); Mohammad, (1985); Serbessa, (2003)) which implies that when a woman marries at an older age, the greater is the chances that she attended school or been employed (Patnaik, 1981), using contraceptives (Bbaale & Mpuga, 2011) and having a more equal relationship with her husband (Karzi & Zeba, 1986) than early age at marriage (Kazi & Sathar, 1986). A woman at an early age of marriage starts to have more children, especially in developing countries where contraceptive use is not widespread which, in turn, have less access to education and increases high-risk unwanted pregnancies affecting the health of both mother and child (Balakrishnan & Mahadevan, 1987).



### *Birth interval and Fertility:*

Birth interval<sup>1</sup> is a major determinant of fertility as well as an important indicator of socioeconomic development. In this study, the estimated results show that since preceding birth interval of a median number of months<sup>2</sup> affects the fertility rate negatively but is not statistically significant. If the birth interval is long then there is more increase in the likelihood of child survival (Potter, 1988) and a preceding birth interval of fewer than 18 months increases the two-fold risk of infant mortality as compared to birth intervals of 36 months or longer (Fosto et al., (2013)). Women who have already a son tend to have a longer birth interval as compared to women without a son (Khan et al. (2016)). Due to the death of a preceding child, the interval for the next birth tends to decrease ((Khan et al. (2016); Chakraborty et al. (1996); Kamal & Khalid, (2012)) as women want to have more children (Setty-Venugopal & Upadhyay, (2002)). Women belonging to high-wealth families have significantly long birth intervals due to education and lifestyle (Kamal & Khalid, 2012). Women who are less educated have shorter birth intervals compared to the women who are educated and educated women are more likely to use contraception to prolong their birth spacing (Tulasidhar, 1993) due to their knowledge regarding the negative effect of short birth intervals as well as benefits of small family size (Som & Mishra, 2020).

### *Unmet Need for family planning and Fertility:*

The unmet need<sup>3</sup> for family planning is one of the key indicators to knowing the insightful changes in fertility and reproductive health scenario. Unmet need for family planning and unmet need for spacing<sup>4</sup> influenced positively and significantly the fertility rate by 0.068 %. On the other hand, the unmet need for limiting<sup>5</sup> effects positively the TFR but is statistically insignificant. Higher rise in unmet need for family planning results in an increase in fertility (Akram et al., (2020); MOHFW, (2012)). The unmet need for spacing was largely more in the case of younger women rather than for limiting as in NFHS-2 (1998-99) in Maharashtra ((MOHFW), 2000). This could be due to the presence of more illiterate married women (Chandra, 1998) who mostly lack information and fear side effects followed by contraceptive method-related reasons (lack of availability and awareness), fertility-related reasons (lactational amenorrhea, desire for more children and sex preference (Rajaretnam, 1994)) (Westoff, (1978); Patil et al. (2010); Rahman, (2016)), opposition from husband and other family members,

---

<sup>1</sup> Birth Interval – It is a time between two successive live births.

<sup>2</sup> Median Birth Interval – It is a number of months since the preceding birth by which half of the children are born.

<sup>3</sup> **Unmet need** refers to the number or percentage of women currently married who are fecund and who desire to either terminate or postponed childbearing, but who are not currently using a contraceptive method. It consists of two groups - unmet need for spacing and unmet need for limiting.

<sup>4</sup> **Unmet need for spacing** - Those women who desire to postpone their next birth for a certain period of time (which may be 2 or more) and who do not currently use any type of contraceptive method is called Unmet need for spacing.

<sup>5</sup> **Unmet need for limiting** - Those women who wish for to stop the childbearing or do not want additional child but they do not use currently any type of contraceptive is called Unmet need for limiting. (Som K. S., 2018)



religious beliefs (Khokhar & Mehra, 2005) and lowest wealth index (Akram et al., (2020); Wulfian et al., (2017); Unicef, (2018)).

### *Sex preference and Fertility:*

Among the sex preference, wanting more sons than daughters are found to have a positive and highly significant effect on the fertility rate which means a one percent increase in wanting more sons than daughters will increase the fertility rate by 0.03%. Whereas wanting more daughters than sons influenced positively but not significantly the fertility rate. Also, wanting at least one son and wanting at least one daughter is found to have negative effects on the fertility rate but are not significant. Son preference is the most prominent form of gender preference among older women with more children ever born and experienced the death of a child (Barman & Sahoo, 2020). Sons are often regarded as productive assets for work on the family farm or in a family business, as providers of security in emergencies and the parent's old age, and as conducts to carry on the family name and to perform various rites of ancestor worship (Lakshmi, 2017). Some studies in states and district-level data analysis have indicated that lower son preference in southern states of India is a powerful factor in reducing fertility there (Dyson & Moore, 1983; Kishor, 1993; Malhotra et al. 1995; Dreze and Murthi, 2001).

### **Conclusion:**

The study has analyzed empirically and identified the factors that affect the fertility pattern and differential in twenty-five states of India using balanced panel data regression models form 1992-1993 to 2019-21.

In the random effects model residence, education and religion, and in the fixed effects model caste, wealth index, mortality rates, contraceptive use, birth orders, age at first marriage, birth intervals, unmet need for family planning and sex preferences are the factors that affect the fertility rate. The empirical results for the panel data indicate that TFR widely varied within different states of India due to the effect of various factors. And it is extremely necessary to conduct such analysis on district-level data. The governments and different organizations' policies should focus on the above-mentioned different factors of fertility, and socioeconomic intervention policies should revise and implement to achieve further reduction in fertility differential in states of India.

## References

- Adhikari, R. (2010). Demographic, Socio-economic and Cultural factors affecting fertility differentials in Nepal. *BMC Pregnancy & Childbirth*, 10(19), 1-11.
- Adefemi, A.A (2017). Panel data regression model in reviews: Pooled OLS, Fixed or random effect model? Retrieved from <https://researchsolutionblog.files.wordpress.com/2017/12/panel-data-regression-model-in-reviews1.pdf>.
- Adioetomo, S. (1995). The role of religion in the construction of the small family norm in Java, Indonesia. *Journal of Population*, 1(1), 107-129.
- Akram, R., Sarker, A. R., Sheikh, N., Ali, N., Mozumder, M., & Sultana, M. (2020, May). Factors associated with unmet fertility desire and perceptions of ideal family size among women in Bangladesh: Insights from a nationwide DEMographic and Health Survey. *PLOS ONE*, 1-17.
- Albsoul-Younes, A., Saleh, F., & W.El-Khateeb. (2003). Perception of efficacy and safety as determinants for use and discontinuation of birth control methods in Muslim Jordanian women. *Eur J Contracept Reprod Health Care*, 8(3), 156-61.
- Arokiasamy, P. (2002). Gender preference, contraceptive use and fertility in India: Regional and development influences. *Population, Space and Place*, 8(1), 49-67.
- Balakrishnan, N. V., & Mahadevan, K. (1987). *Socio-economic determinants of differential fertility in Kerala*.
- Balasubramanian, K. (1980). Differential Fertility in India: An evidence from a survey in Karnataka state. *Ph.D Thesis submitted at Research School of Social Sciences, Australian National University*.
- Baltagi, B. (1986). Pooling Cross-Sections with unequal Time Series Length, *Economics Letters*, 133-136
- Balasubramanian, K. (1984). Hindu-Muslim Differentials in Fertility and Population Growth in India: Role of Proximate Variable. *Artha Vijnana*, 26(3), 189-216.
- Barman, P., & Sahoo, H. (2020). Sex preference in India: Trends, patterns and determinants. *Children and Youth Services Review*, 1-8.
- Basu, A. (2002). Why does Education Lead to Lower Fertility? A critical Review of Some of the Possibilities. *World Development*, 30(10), 779-1790.
- Basumatary, K., & Devi, M. (2022). Pooled OLS and fixed effect estimation of Wage Differential in Handloom sector: choosing the better method. *Journal of Social Economics Research*, 137-146.

- Bbaale, E., & Mpuga, P. (2011). Female education, contraceptive use and fertility: evidence from Uganda. *The Journal of Sustainable development*, 06(01), 20-47.
- Bbaale, E., & Mpuga, P. (2011). Mothers education, contraceptive use and fertility Uganda. *The Journal of Sustainable Development*, 6(1), 20-47.
- Bharati, P., & Dastidar, M. (1990). Maternal Education, fertility and mortality in the Bengali population sample. *J. Ind. Anthropol. Soc.*, 25, 90-93.
- Bhat, P. M., & Zavier, A. (1999). Francis: Findings of NFHS: Regional analysis. *Economic and Political Weekly*, XXXIV, 3008-33.
- Borkotoky, K., & Unisa, S. (2014). Female education and its association with changes in socio-demographic behaviour: Evidence from India. *J. Biosoc. Sci.*, 1-20.
- Cedric, D. (2004). The Easterlin hypothesis. *Historical Social Research* 29 (3), 205-212.
- Census report, Government of India. (2011). *Census of India*. Office of the Registrar General & Census Commissioner. Ministry of Home Affairs, Govt. of India, India.
- Chakraborty, N., Sharmin, S., & Islam, M. (1996). Differential pattern of birth interval in Bangladesh. *Asia-Pac Popul J*, 11(4), 73-86.
- Chandra, S. (1998). Neo literate and family planning acceptance in Rajasthan. *Indian Journal of Community Medicine*, 23(2), 69-71.
- Coachrane, S. (1983). Effects of Education and Urbanization on Fertility . In R. A. Lee, *Determinates of Fertility in Developing Countries* (Vol. 2, pp. 587-625). New York: Academic Press.
- Coale, A. (1975). The population debate: Dimensions and perspectives. *World Population Conference*, 1, pp. 347-355. Bucharest.
- Das, A. Gupta., Ranjan, S. K., & Mitra, M. M. (1955). *The National Sample Survey Number 7, Couple Fertility. NSS*. Calcutta.
- Das, N., & Dey, D. (1998). Female age at marriage in India: trends and determinants. *Demo. Ind. spl*(91).
- Das, N., & Pandey, D. (1985). Fertility Differentials by Religion in India: An Analysis of 1971, Census Fertility Data. *Canadian Studies in Population*, 12(2), 119-135.
- Devi, A. T. (2013). *Differential Fertility of the Aimols of Manipur, Ph.D thesis submitted to MANIPUR UNIVERSITY (Unpublished)*. Retrieved from [www.shodhganga.inflibnet.ac.in: http://hdl.handle.net/10603/39987](http://hdl.handle.net/10603/39987)

- Doubleday, T. (2010). *The true Law of Population*. Kessinger Publishing, LLC.
- Dreze, J., & Murthi, M. (2001). Fertility, education, and development: evidence from India. *Population and development Review*, 27(1), 33-63.
- Dumont, A. (1890). *Depopulation at civilization: Etude Demographique*. Paris: Lecrosnier et Babe. Reissued with biographical and critical introduction by Andre Bejin. Economica.
- Dyson, T and Moore, M (1983). On Kinship Structure, Female Autonomy, and Demographic Behaviour in India. *Population and Development Review*, 9, 35-60.
- Directorate of Census Operations.(2011).*District Census Handbook, Assam*
- Easterlin, A. R. (1961). The American baby boom in historical perspective. *American Economic Review* 51(5), 869-911.
- Economic Survey 2018-19. (n.d.). *India's Demography at 2040: Planning Public good provision for the 21st century*.
- Encarnacion, J. (1974). *Fertility and labour force participation: Philippines 1968*. Geneva, Switzerland: International Labour Organization.
- Fosto, J., Cleland, J., Mberu, B., Mutua, M., & Elungata, P. (2013). Birth Spacing and Child mortality: An analysis of prospective data from the Nairobi Urban Health and Demographic Surveillance System. *Journal of Biosocial Science*, 45(6), 779-798.
- Gini, C., & Felice Vinci, N. M. (2016). *Report on the problem of raw material and foodstuffs*. Palala Press.
- Gogoi, M. (2018 (a)). Family Planning and Socio-Economic Dynamics: A Study among Boro Kachari Tribe of Assam. *International Journal of Current Trends in Science and Technology*, 8(04), 81-90.
- Government of India (2000). *National Population Policy*. Department of Family Welfare, MOHFW.
- Government of Bangladesh (2012). *Bangladesh Population policy 2012*. MOHFW Dhaka, Bangladesh.
- Hassan, M. I. (2020). *Population Geography : A systematic Exposition*. New york: Routledge.
- Howell, E. M., Holla, N., & Waidmann, T. (2016). Being the younger child in a large African family: a study of birth order as a risk factor for poor health using the demographic and health surveys for 18 countries. *BMC Nutrition*, 2(61), 1-12.

- Htun, M. L., & Ard-am, O. (2015). Factors affecting the fertility differential in different states and regions in Myanmar. *J Health Res*, 29(06), 409-415.
- International Institute of Population Sciences. (2007). *National Family Health Survey, India 2005-06: All India*. Mumbai.
- Jaffe, A. (1959). *People, Jobs and Economic Development*. Glencoe: IL: Free Press.
- James, K. (2011). India's Demographic Change: Opportunities and challenges. *Science*, 333, 576-580.
- Jeffery, P., & Jeffery, R. (2002). A population out of control? Myths about Muslim fertility in contemporary India. *World Dev.*, 30, 1805-22.
- Kabir, A., Jahan, G., & Jahan, R. (2001). Female age at marriage as a determinant of fertility. *The Sciences*, 1(6), 372-376.
- Kamal, A., & Khalid, P. (2012). Determinants of Higher Order Birth Intervals in Pakistan. *J Stat*, 19(1), 54-82.
- Kapoor, A. K., K.Kshatriya, G., Vijeta, & Kapoor, S. (2015). Pathsala : A gateway to post graduate courses, subject- Anthropology, paper- 12 Demographic Anthropology, module- 05 pattern and trends in fertility. MHRD, Government of India.
- Karki, Y. B. (1982). *Fertility and the value of children: A study of rural and urban populations in Nepal*. PhD Thesis, London school of economics, London.
- Karzi, S., & Zeba, A. (1986). Productive & reproductive choices: Report of a pilot survey of urban working women in Karachi. *The Pakistan Development Review*, 25(4), 594-606.
- Kazi, S., & Sathar, Z. (1986). Productive and reproductive choices: Report of a pilot survey of urban working women in Karachi. *The Pakistan Development Review*, 25(4), 594-606.
- Khan, A. A. (2008). Fertility Pattern in Southern Punjab: A Case of Bahawalpur District. *Research Gate*.
- Khan, J. R., Bari, W., & Latif, A. M. (2016). Trend of determinants of birth interval dynamics in Bangladesh. *BMC Public Health*, 1-11.
- Khokhar, A., & Mehra, M. M. (2005, Jan - March). Contraceptive use in women from a Resttlement Area in Delhi. *Indian Journal of Community Medicine*, 30(1), 21-23.
- Khongsdier, R. (2005). *Demographic Genetics of an Indian population*. Itanagar & New Delhi: Himalayan Publishers.

- Kishor, S.(1993).May God Give Sons to All: Gender and Child Mortality in India.*American Sociological Review* vol.58, no. 2, pp 247-265.
- Kulkarni, P. (2011). Towards and Explanation of India's Fertility Transition. *George Simmons Memorial Lecture, 33rd Annual Conference of the Indian Association for the Study of Population*. Lucknow.
- Kumar, P. (2018). *Fertility decline and its association with maternal and child health care in India*. International Institute for Population Sciences (IIPS) (Deemed University), Department of Population Policies and Programmes. Mumbai: shodhganga@inlibnet. Retrieved from <http://hdl.handle.net/10603/323068>
- Lakshmi, V. (2017). *A Study on economic determinants of fertility and fertility differentials in Thanjavur district*. Unpublished Ph.D Thesis, Government Arts College (Autonomous), Kumbakonam, DEPARTMENT OF POST GRADUATE STUDIES AND RESEARCH IN ECONOMICS, Tamil Nadu.
- Leibenstein, H. (1974). An interpretation of the Economic theory of fertility. *Journal of Economic Literature* ol.12 no.2, 457-479 .
- Libenstein, H. (1957). *Economic Backwardness and Economic Growth*. New York: John Wile and Sons.
- Mahanta, A., & Guttmacher, S. (2016). Impact of education on fertility: evidence from a tribal society in Assam,India. *International Journal of Population Research*.
- Malthus, T. (1826, ). *An essay on the Principle of Population*. London: J Johnson.
- Malhotra, A., Vanneman, R., and Kishor, S (1995). Fertility, Dimension of Patriarchy, and Development in India. *Population and Development Review* vol. 21, no 2, pp 281-305.
- Martin, T. C. (1995). Women's education and fertility: Result from 26 demographic and health surveys. *Study in Family Planning*, 26(4), 187-202.
- Mari Bhat and Xavier.(2003) Fertility Decline and Gender Bias in Northeast India, *Demography* 40(4). 637-657.<https://doi.org/10.2307/1515201>
- Mary, M. (2003). *Childhood Mortality in the Developing world: A Review of Evidence from the Demographic and Health Surveys*. DHS Comparative Reports, No.4.
- Mazumder, M. N., & Mukherjee, S. (2018). Level and Differentials of Fertility among Karbis of Kamrup Metropolis, Assam. *Studies of Tribes and Tribals*, 16(1/2), 24-32.
- Miller, J. (1989). Is the Relationship Between Birth Intervals and Perinatal Mortality Spurious? Evidence from Hungary and Sweden. *Population Studies*, 479-495.

- Miller, J., Trussell, J., Pebley, A., & Vaughan, B. (1992). Birth Spacing and Child Mortality in Bangladesh and the Philippines. *Demography*, 29(2), 305-318.
- Ministry of Tourism, Government of India. (n.d.). *About India*. Retrieved from Incredible India: <https://incredibleindia.org/content/incredibleindia/en/discover-india/about-india.html>
- Mistry, M. (1995). Role of religion in fertility and family planning among Muslims in India. *Indian Journal Secularism*, 3(2), 1-33.
- Mohammad, A. (1985). Age at first marriage and cumulative fertility in Pakistan. *Asian population studies Series*, 59, 40-50.
- Mulatti, L. (1995). Religious and ideological orientations and characteristics. *Journal of Comparative Family Studies, Special issue: Families in Asia: Beliefs and realities*, XXVI(1), 11-25.
- Murphy, M., & Knudsen, L. (2002). The intergenerational Transmission of fertility in Contemporary Denmark: The Effects of Number of Siblings (Full and Half), Birth Order and Whether Male or Female. *Population Studies*, 56(3), 235-248.
- Newson, Postmes T, Lea. S E., & Webley. (2005). Why are modern families small? Toward an evolutionary and culturalexplanation for the demographic transition. *Pers.Soc. Psycho; .Rev* 9, 360-375.
- Nagadeve, D. A., & Dongardive, P. B. (2021). Fertility and Family Planning Differentials among Social Groups in India. *Demography India*, 50(1), 1-16.
- National Family Health Survey-1. (1992-93). IIPS, Ministry of Health & Family Welfare, Govt. of India, Mumbai.
- National Family Health Survey-2. (1998-99). IIPS, Ministry of Health & Family Welfare, Govt. of India, Mumbai.
- National Family Health Survey-3. (2005-06). IIPS, Ministry of Health & Family Welfare, Govt. of India, Mumbai.
- National Family Health Survey-4. (2015-16). IIPS, Ministry of Health and family welfare, Govt. of India, Mumbai.
- National Family Health Survey-5. (2019-21). IIPS, Ministry of Health & Family Welfare, Govt. of India, Mumbai.
- Nyi, N. (2005). *The Determinants of age at first marriage in Myanmar*. Mahidol University, Bangkok.



- Patil, S., Rashid, K., & Narayan, K. (2010). Unmet needs for contraception in married women in a tribal area of India. *Malayasian J Pub Health Med%*, 10(2), 44-51.
- Patnaik, M. M. (1981, October). Age at marriage and fertility behaviour. *The Indian Journal of social work*, XLII(3), 240-246.
- Pearce, L. (2001, March 29-31). Religion's role in shaping childbearing preferences: The impact of Hinduism and Buddhism. *Population association of America annual meeting*.
- Potter, J. (1988). Birth Spacing and Child Survival: A Cautionary Note Regarding the Evidence from the WFS. *Population Studies*, 42(3), 443-450.
- Qadeer, D. (2002). *Socio-Economic Determinants of Human Fertility Differentials in Aligarh District, Ph.D thesis submitted to Aligarh Muslim University (Unpublished)*. Retrieved from [www.shodhganga.inflibnet.ac.in: http://hdl.handle.net/10603/52657](http://www.shodhganga.inflibnet.ac.in: http://hdl.handle.net/10603/52657)
- Quraishi, S. (1996). Muslims' low practice of family planning. India. Low levels of education, particularly among women, is one of the major reasons behind high fertility rates. *Integration*, 47, 23-7.
- Rahman, S. (2016, June). A Comparative study on unmet need for contraception among married women of reproductive age in urban slums of Guwahati and rural area of Rani Block, Kamrup, Assam. *Indian Journal of Basic and Applied Medical Research*, 5(3), 442-450.
- Rajaretnam, T. (1994). The effect of sex preference on contraceptive use and fertility in rural South India. *International family Planning perspective*, 20(3), 88-95.
- Reddy, P. (2003). Women's education and human fertility in India. *Social Change*, 33(04), 52-64.
- Rele, J. A. (1976). Fertility differentials by religion in greater Bombay: role of explanatory variables. In L. Ruzicka, *The Economic and Social supports for high fertility, changing African Family Project Series, no. 2, Department of Demography*. The Australian National University, Canberra.
- Retherford, R. D., & Thapa, S. (2003). Fertility in Nepal, 1981-2000: level, trend and component of change. *Population and Health Series*(111).
- Roy, S. (2017). *The Changing Patterns of Fertility in India: A statistical Analysis, Ph.D thesis submitted to Banaras Hindu University (Unpublished)*. Retrieved from [www.shodhganga.inflibnet.ac.in: http://hdl.handle.net/10603/275790](http://www.shodhganga.inflibnet.ac.in: http://hdl.handle.net/10603/275790)
- Roy, S., & Hossain, S. M. (2017). Fertility differential of women in Bangladesh demographic and health survey 2014. *Roy and Hossain Fertility Research and Practice*, 3(16), 1-5. Retrieved from 10.1186/s40738-017-0043-z



- Roy, S., Singh, K., Singh, B. P., & Gupta, K. (2015). Study of Influence of Caste Differentials on Fertility and Contraception. *Journal of Statistics Applications & Probability Letters*, 2, 149-160.
- Sadia, C. (2010). *Determinants and Consequences of High fertility: A Synopsis of the Evidence*. The World Bank.
- Sadler, M. T. (2013). *The Law of Population*. Book on Demand Ltd.
- Sahu, A. (2006). *Influence of female age at marriage on fertility and child loss: a study of selected state in India*. Unpublished PhD Thesis, International Institute of Population Sciences, Mumbai.
- Sargent, C., & Cordell, D. (2003). Polygamy, disrupted reproduction, and the state: Malian migrants in Paris, France. *Soc Sci Med.*, 56(9), 1961-72.
- Sarkar, P. (2010). Determinants of age at first birth in Bangladesh. *Journal of Modern Mathematics and Statistics*, 4(1), 1-6.
- Sciences, I. I. (2007). *National Family Health Survey (NFHS-3), 2005-06*. Mumbai: IIPS.
- Serbessa, D. (2003). Differential impact of women's educational level on fertility in Africa: The case of Ethiopia. *Addis Ababa*.
- Setty-Venugopal, V., & Upadhyay, U. (2002). Birth spacing: three to five saves lives. *Popul Rep*, L(13), 1-23.
- Sforza, C., & Feldman. (1981). *Cultural transmission and evolution: a quantitative approach*. Princeton University Press.
- Sforza, C., & Feldman. (1981). *Cultural transmission and evolution: a quantitative approach*. Princeton University Press.
- Shumayla, S., & Kapoor, S. (2017). Knowledge, attitude, and practice of family planning among muslim women of North India. *International journal of medical science and public health* 6(4).<https://doi.org/10.5455/ijmsph.2017.1266308122016>
- Sibanda, A., Woubalem, Z., Hogan, D., & Lindstrom, D. (2003). The proximate determinants of the decline to below-replacement fertility in Addis Ababa, Ethiopia. *Studies in Family Planning*, 34(1), 1-7.
- Singh, P. (2019). *Study on Fertility, Its Proximate Determinants and their Correlates in Urban Slums*, Ph.D thesis submitted to Banaras Hindu University (Unpublished). Retrieved from [www.shodhganga.inflibnet.ac.in](http://www.shodhganga.inflibnet.ac.in): <http://hdl.handle.net/10603/349089>

- Sisouphathong, B., Xaovana, V., Louangvixa, B., & Chanthalanouvong, T. (2000). *Lao reproductive health survey*. Lao department of statistics, Vientiane.
- Som, K. (2018). *Fertility Pattern and Adoption of Family Welfare Programme in Sagar District, Ph.D thesis submitted to Dr. Harisingh Gour Vishwavidyalaya (Unpublished)*. Retrieved from [www.shodhganga.inflibnet.ac.in](http://www.shodhganga.inflibnet.ac.in): <http://hdl.handle.net/10603/231208>
- Som, K. S., & Mishra, R. (2020). Role of women education for fertility reduction: a case study of Sagar district, India. *Human Geographies – Journal of Studies and Research in Human Geography*, 14(01), 73-90.
- Spencer, H. (2017). *First Principles*. Serapis Classics.
- Statistical Handbook of BTC. (2018-19). Kokrajhar: Office of the Joint Director of Economics & Statistics BTC.
- Statistical Handbook of BTC. (2019-21). Kokrajhar: Office of the Joint Director of Economics & Statistics BTC.
- Stycos, J. (1965). Education and Fertility in Puerto Rico. *the world conference*. Belgrade, Serbia.
- Tafforeau, J., Damiba, A., & Maternowska, M. (1990). Changes in Chad: The results of a KAP survey. *Biol Soc.*, 7(4), 194-202.
- Tharun, G., & Muniswamy, B. (2022). Caste as a Differential Factor in Fertility and Contraception Rates. *Mathematical Statistician and Engineering Applications*, 71(4), 656-677.
- Tulasidhar, V. (1993). Maternal education, female labour force participation and child mortality: evidence from the Indian census. *Health Transit Rev*, 177-90.
- Unicef. (2018). *Children are the most important resource for future economic growth*. Unicef Press Release.
- United Nations. (1977). Level and trends of fertility throughout the world 1950-1970, ST/ESA/SER.A/59.
- Verma, G., Babu, B., & A.Rohini. (1999). A study on fertility and its socio – demographic determinants among rural population of West Godavari districts, Andhra Pradesh. *J. Hum. Ecol.*, 10, 179-182.
- Visaria, L. (1974). Religious differentials in fertility. In A. E. Bose, *Population in India's development 1947-2000*. Delhi.
- Visaria, L. (1974). Religious Differentials in Fertility. In A. B. al., *Population in India's Development* (pp. 1947-2000). Delhi: Vikas Publishing House.

Wankhede, A., & Paswan, B. (2011). Status of SC, ST Women among social groups: Evidence from district level Household Survey-3. (D. S. Poddar, Ed.) *Shodh Prerak*, 1(3).

Westoff, C. (1978). The unmet need for birth control in five Asian countries. *International family planning perspectives*, 10(3), 173-181.

Wulfian, J., Jahan, A., Hien, H., Ilboudo, P., Meda, N., Robyn, P., & al., e. (2017). Determinants of unmet need for family planning in rural Burkina Faso: A multilevel logistic regression analysis. *BMC Pregnancy Childbirth*, 17(1), 1-11.

Zarate, A. D. (1967). Some factor associated with urban-rural fertility differential in Mexico. *Population Studies*, 21(3), 283-293.

## Appendix-I

Table 1: *The list of selected states region-wise of India*

Regions	States	Total Fertility Rate (TFR)
Northern Region (NR)	Haryana	1.91
	Himachal Pradesh	1.66
	Punjab	1.63
	Rajasthan	2.01
Central Region (CR)	Madhya Pradesh	1.99
	Uttar Pradesh	2.35
East Region (ER)	Bihar	2.98
	Jharkhand	2.26
	Odisha	1.82
	West Bengal	1.64
Northeastern Region (NER)	Arunachal Pradesh	1.8
	Assam	1.87
	Manipur	2.17
	Meghalaya	2.91
	Mizoram	1.87
	Nagaland	1.72
	Sikkim	1.05
	Tripura	1.7
	Andhra Pradesh	1.68

Southern Region (SR)	Karnataka	1.67
	Kerala	1.79
	Tamil Nadu	1.76
Weatern Region (WR)	Goa	1.30
	Gujarat	1.86
	Maharastra	1.71
Country	India	1.99

**Source:** NFHS, 2019-21.

## Appendix-II

**Table 2:** Age-specific Fertility Rates, Total Fertility Rates, and Crude Birth Rates by the residence of India

Age	NFHS-1 (1992-93)			NFHS-2 (1996-98)			NFHS-3 (2005-06)			NFHS-4 (2015-16)			NFHS-5 (2019-21)			%change (NFHS-1 to NFHS-5		
	Urban	Rural	Total	Urban	Rural	Total	Urban	Rural	Total	Urban	Rural	Total	Urban	Rural	Total	Urban	Rural	Total
15-19	75	131	116	68	121	107	57	105	90	35	59	51	27	49	43	-64	-62.6	-62.9
20-24	203	243	231	179	222	210	166	231	209	143	205	184	123	184	165	-39.4	-24.3	-28.6
25-29	154	177	170	127	150	143	123	146	139	114	135	128	110	127	122	-28.6	-28.2	-28.2
30-34	71	108	97	57	75	69	48	69	62	44	55	51	50	49	50	-29.6	-54.6	-48.5
35-39	27	51	44	18	33	28	13	31	25	12	20	17	13	15	14	-51.9	-70.6	-68.2
40-44	6	19	15	3	11	8	4	9	7	2	5	4	3	3	3	-50	-84.2	-80
45-49	4	6	5	1	4	3	1	4	3	0	2	1	0	1	1	-100	-83.4	80

TFR	2.7	3.67	3.39	2.27	3.07	2.85	2.06	2.98	2.68	1.75	2.41	2.18	1.63	2.14	1.99	-	-	-
																39.6	41.7	41.3
CBR	24.1	30.4	28.7	20.9	26.2	24.8	18.8	25	23.1	15.8	20.7	19	14	18.6	17.1	-	-	-
																41.9	38.8	40.4

**Source:** National Family Health Survey-1 to National Family Health Survey-5

### Appendix-III

Table 3: Total Fertility Rates by background characteristics of India

Background characteristics	TFR (NFHS-1)	TFR (NFHS-2)	TFR (NFHS-3)	TFR (NFHS-4)	TFR (NFHS-5)
<b>Residence</b>					
Urban	2.70	2.27	2.06	1.75	1.63
Rural	3.67	3.07	2.98	2.41	2.14
<b>Schooling</b>					
No schooling	4.03	3.47	3.55	3.07	2.82
Less than 5 years complete	3.01	2.64	2.45	2.43	2.30
5-7 years complete	2.49	2.26	2.51	2.38	2.21
8-9 years complete	2.15	1.99	2.23	2.19	2.12
10-11 years complete			2.08	1.99	1.88
12 or more			1.8	1.71	1.78
<b>Religion</b>					
Hindu	3.30	2.78	2.59	2.13	1.94
Muslim	4.41	3.59	3.40	2.62	2.36
Christian	2.87	2.44	2.34	1.99	1.88
Sikh	2.43	2.26	1.95	1.58	1.61
Buddhist/neo- Buddhist	NA	2.13	2.25	1.74	1.39
Jain	NA	1.90	(1.54)	1.20	1.60
Other	2.77	2.33	3.98	2.57	2.15
<b>Caste/tribe</b>					
Scheduled caste	3.92	3.15	2.92	2.26	2.08
Scheduled tribe	3.55	3.06	3.12	2.48	2.09
Other backward class	NA	2.83	2.75	2.22	2.02
Other	3.30	2.66	2.35	1.93	1.78
<b>Wealth index</b>					
Low	NA	3.37	3.89	3.17	2.63
Medium	NA	2.85	2.58	2.07	1.89

High	NA	2.10	1.78	1.54	1.57
Total	3.39	2.85	2.68	2.18	1.99

\*NA-

Not Available \* () Based on 125-249 woman-years of exposure for the total fertility rate and 25-49 unweighted cases for the mean number of Children-ever born.

**Source:** NFHS-1, NFHS-2, NFHS-3, NFHS-4 & NFHS-5.

#### Appendix-IV

Table 4: Age-specific Fertility Rates (ASFR), Total Fertility Rates (TFR), and Crude Birth Rates (CBR) by residence, Assam

Age	NFHS-2 (1996-98)			NFHS-3 (2005-06)			NFHS-4 (2015-16)			NFHS-5 (2019-21)			%change during NFHS-2 to NFHS-5		
	Urban	Rural	Total	Urban	Rural	Total	Urban	Rural	Total	Urban	Rural	Total	Urban	Rural	Total
15-19	40	94	89	49	94	86	36	78	72	41	64	61	2.5	-31.91	-31.46
20-24	110	152	149	96	167	154	89	161	151	92	142	135	-16.36	-6.58	-9.86
25-29	84	119	116	77	138	127	95	124	119	91	101	100	-8	-16.36	-14.81
30-34	52	72	70	50	76	71	50	68	66	55	53	53	-5.61	-30.4	-27.64
35-39	14	33	31	14	46	39	15	27	25	16	22	21	-13.34	-40	-38.46
40-44	0	8	7	0	10	7	3	8	7	3	4	4	*	-66.67	-54.54
45-49	(0)	0	0	(0)	0	0	0	2	2	2	0	1	*	*	*
TFR	1.50	2.39	2.3	1.43	2.65	2.42	1.45	2.34	2.21	1.50	1.93	1.87	0	-21.29	-21.05



			1												
CBR	15.8	22.3	21. 8	13.6	23.9	22.1	13.2	20.5	19.5	13.1	17.4	16.8	-18.68	-24.68	-25.91

\*Data is not sufficient to calculate.

**Source:** National Family Health Survey-2 to National Family Health Survey-5

## Appendix-V

Table 5: Total Fertility Rates by background characteristics of Assam.

Background characteristics	TFR (NFHS-2)	TFR (NFHS-3)	TFR (NFHS-4)	TFR (NFHS-5)
<b>Residence</b>				
Urban	1.50	1.43	1.45	1.50
Rural	2.39	2.65	2.34	1.93
<b>Schooling</b>				
No schooling	2.83	3.35	2.92	2.27
Less than 5 years complete	2.40	(2.93)	2.60	2.43
5-7 years complete	1.78	2.13	1.12	0.98
8-9 years complete	1.26	1.29	1.11	0.98
10-11 years complete	1.26	1.29	1.93	1.70
12 or more			1.74	1.51
<b>Religion</b>				
Hindu	2.00	1.95	1.84	1.59
Muslim	3.05	3.64	2.93	2.38
Christian	1.69	-	2.32	1.47
Sikh	-	-	-	-
Buddhist/neo- Buddhist	-	-	-	-
Jain	-	-	-	-
Other	(1.42)	-	1.28	1.54
<b>Caste/tribe</b>				
Scheduled caste	2.57	(2.45)	1.83	1.73
Scheduled tribe	2.10	(2.49)	2.14	1.54
Other backward class	1.54	1.61	1.85	1.62
Other	2.35	2.73	2.52	2.12
<b>Wealth index</b>				
Low	2.96	4.06	-	-
Medium	1.95	2.01	-	-
High	1.39	1.21	-	-
Total	2.31	2.42	2.21	1.87

() Based on 125-249 woman-years of exposure for the total fertility rate and 25-49 unweighted cases for the mean number of children ever born.

\* Not shown; based on fewer than 125 unweighted woman-years of exposure for fertility rates. **Source:** NFHS-2, NFHS-3, NFHS-4 & NFHS-5.

