

PREPRINT

Author-formatted, not peer-reviewed document posted on 11/01/2024

DOI: <https://doi.org/10.3897/arphapreprints.e118611>

Host fungus confirmed for *Pelecocera* (*Pelecocera*) *tricinta* and *Pelecocera* (*Chamaesyrrhus*) *caledonica* (Diptera, Syrphidae)

 Gunilla Ståhls

Disclaimer on biological nomenclature and use of preprints

The preprints are preliminary versions of works accessible electronically in advance of publication of the final version. They are not issued for purposes of botanical, mycological or zoological nomenclature and **are not effectively/validly published in the meaning of the Codes**. Therefore, nomenclatural novelties (new names) or other nomenclatural acts (designations of type, choices of priority between names, choices between orthographic variants, or choices of gender of names) **should NOT be posted in preprints**. The following provisions in the Codes of Nomenclature define their status:

International Code of Nomenclature for algae, fungi, and plants (ICNafp)

Article 30.2: "An electronic publication is not effectively published if there is evidence within or associated with the publication that its content is merely preliminary and was, or is to be, replaced by content that the publisher considers final, in which case only the version with that final content is effectively published." In order to be validly published, a nomenclatural novelty must be effectively published (Art. 32.1(a)); in order to take effect, other nomenclatural acts must be effectively published (Art. 7.10, 11.5, 53.5, 61.3, and 62.3).

International Code of Zoological Nomenclature (ICZN)

Article: 21.8.3: "Some works are accessible online in preliminary versions before the publication date of the final version. Such advance electronic access does not advance the date of publication of a work, as preliminary versions are not published (Article 9.9)".

Host fungus confirmed for *Pelecocera* (*Pelecocera*) *tricincta* and *Pelecocera* (*Chamaesyrrhus*) *caledonica* (Diptera, Syrphidae)

Gunilla Ståhls ‡

‡ Finnish Museum of Natural History Luomus, Helsinki, Finland

Corresponding author: Gunilla Ståhls (gunilla.stahls@helsinki.fi)

Abstract

MtDNA COI barcodes have frequently been used to associate an unknown life stage in insects with a known species. This study reports the discovery of hoverfly larvae in the fungal fruit bodies of *Rhizopogon luteolus* Fr. & Nordholm, 1817, and the identification of these as *Pelecocera* (*Pelecocera*) *tricincta* and *Pelecocera* (*Chamaesyrrhus*) *caledonica* (Collin, 1940) (Diptera, Syrphidae), confirming for the first time mycophagy as feeding mode of the larvae of these *Pelecocera* species in the Western Palaearctic region. The species identity of some larvae was firstly resolved using mtDNA COI barcodes generated from the larvae and tree-based identification. Obtained puparia were reared into adult flies and produced the same two species. The morphological features of these mycophagous larvae are compared with those of other fungus feeding hoverfly species.

Keywords

mycophagy, *Pelecocera*, *Rhizopogon luteolus*, DNA barcoding

Introduction

Pelecocera Meigen, 1822 (Syrphidae, Eristalinae, Rhingiini) is a small genus with eleven species distributed in the Holarctic region. The molecular phylogenetic study of Rhingiini taxa by Vujić et al. (2018) resolved the genus *Pelecocera* as comprising two subgenera, the monospecific nominal subgenus *Pelecocera* and the subgenus *Chamaesyrrhus* Mik, 1895 with eight species in the Palaearctic. The recent study by Van Eck and Mengual (2021). Nève and Lair (2023) reviewed the classificatory history of the genus and its subgenera in the Palaearctic region. Out of the eight Palaearctic *Pelecocera* sg. *Chamaesyrrhus* species, all but one occur in geographical Europe (Van Eck and Mengual 2021), as *Pelecocera* (*Chamaesyrrhus*) *japonicus* Shiraki, 1956 is only known from Japan.

For the Nearctic region, three other *Pelecocera* sg. *Chamaesyrrhus* species are listed (Lair et al. 2022, Skevington 2020).

Members of the subgenus *Chamaesyrrhus* may be distinguished from *Pelecocera* s.str. by the position and thickness of the antennal arista, which is slender and typically placed dorsobasally on the basoflagellomere in *Chamaesyrrhus*, while it is thick and in apical position in *Pelecocera* s.str.

The feeding mode of the *Pelecocera* spp. larvae has remained unknown, and phytophagy has been suggested as feeding mode (e.g. Speight 2020). Recently Okada et al. (2021) confirmed mycophagy as the feeding mode of *Pelecocera* (*Chamaesyrrhus*) *japonica*. They observed larvae in fungal fruit bodies of *Rhizopogon roseolus* (Corda) Th. Fr., Svensk, 1909 (Blushing False Truffle) and *Rhizopogon luteolus* Fr. & Nordholm, 1817 (Yellow False Truffle) in Japan. They reared some larvae from the fungi, and after the pupation they obtained adult flies of the species *Pelecocera* (*Chamaesyrrhus*) *japonicus* (as *Chamaesyrrhus japonicus*).

Rhizopogon is a genus of ectomycorrhizal basidiomycetes in the family Rhizopogonaceae (Basidiomycota, Boletales), and the genus is closely related to the genus *Suillus* (Boletaceae) (Grubisha et al. 2002, Binder and Hibbett 2007). *Rhizopogon* species form hypogeous sporocarps commonly referred to as “false truffles”, but the fruit bodies are of disputed edibility. *Rhizopogon* species are primarily found in ectomycorrhizal association with trees in the family Pinaceae (e.g. Molina and Trappe 2006). Through their ectomycorrhizal relationships, *Rhizopogon* are thought to play an important role in the ecology of coniferous forests.

MtDNA COI barcodes have frequently been used to associate an unknown life stage in insects with a known species (e.g. Ståhls et al. 2014, Sonet et al. 2013). In this study, I report the discovery of hoverflylarvae in the fruit bodies (sporocarps) of *Rhizopogon luteolus* in Finland. The species identity of the larvae was initially resolved with mtDNA COI barcodes using tree-based comparison, and are *Pelecocera* (*Pelecocera*) *tricincta* and *Pelecocera* (*Chamaesyrrhus*) *caledonica* (Collin, 1940). The next step included rearing, and produced adult flies of the same two species.

Material and methods

Fieldwork

The Kallahdenniemi recreational area of the city of Helsinki is situated in eastern Helsinki (Finland). This sandy soil forested area is dominated by Scots pine (*Pinus sylvestris*). From this area the hoverflies *Pelecocera caledonica* and *Pelecocera tricincta* were repeatedly recorded (<https://laji.fi/>). During several visits to Kallahdenniemi in late August 2023 the mentioned hoverfly species were observed. In autumn 2023 multiple fungal fruit bodies (sporocarps) of *Rhizopogon* sp. were found (Figs 1, 2). In the field some *Rhizopogon* fruit bodies were inspected for presence of hoverfly larvae by making a slit using a sharp-egged

knife to expose the inner fungal tissue for visual inspection. Multiple both young and mature sporocarps of *Rhizopogon* were inspected in Kallahdenniemi and larvae identified as hoverfly larvae were observed in a few sporocarps (Fig. 3). On 17 September and 2 October 2023 altogether six mature sporocarps of brownish-yellow colour (all about 3-4 cm in diameter) were taken for rearing. Sporocarps were placed together in a plastic jar with tissue paper on the bottom and kept outdoors in the shade. The sporocarps decayed into a liquefied olive-brown soup within 2-3 weeks after collection. From the jar with the liquefied sporocarps seven second or third instar larvae were removed and placed individually in tubes for immediate DNA analysis. The plastic jar was still kept outdoors until severe frost nights occurred, after which puparia were searched for and placed individually in petri dishes for emergence of adult flies. Emerged flies were pinned, and the empty puparia glued on cardboard.

Laboratory procedures

DNA was extracted from each entire larva using the Phire™ Tissue Direct PCR master Mix #F-170S kit (Thermo Scientific Baltics UAB, Vilnius, Lithuania) following the Dilution & Storage protocol with some modifications. The Phire™ Tissue Direct PCR master Mix is designed to perform PCR directly from tissue samples with no prior DNA purification. The larva was placed in an Eppendorf tube in 40 µl of Dilution Buffer, and 0.8 µl of DNA Release Additive was added. The tube was briefly vortexed and centrifuged and then 1) incubated at room temperature for about 20 min, 2) placed in +56 °C for 10 min and 3) placed in a pre-heated block at 98°C for 2 minutes (after this stage the larvae were removed and put in individual tubes with about 25% ethanol), and finally centrifuged at 11 000 rpm for 1 min. Two µl of supernatant was used in a 25µl PCR reaction using the PCR Master Mix solution provided with the kit. The mtDNA COI barcode was PCR amplified using universal primers LCO1490 and HCO2198 (Folmer et al. 1994), or a shorter fragment using primers Beet (Simon et al. 1994) and HCO2198. Amplified PCR products were electrophoresed on 1.5% agarose gels. Successful amplifications were treated with Exo-SapIT (USB Affymetrix, Ohio, USA) prior to sequencing. The PCR primers were used for sequencing, which was outsourced to the Sequencing Service Laboratory of the Institute for Molecular Medicine Finland (www.fimm.fi). The sequences were edited for base-calling errors and assembled using Sequencher™ (version 5.0) (Gene Codes Corporation, Ann Arbor, MI, USA), and obtained barcode sequences were submitted to GenBank.

Specimen identification

The newly obtained COI barcodes were added to a COI barcode data matrix including 25 nucleotide sequences of *Pelecocera* spp. mined from the NCBI GenBank database (www.ncbi.nlm.nih.gov). Tree-based identification (Hebert et al. 2003) was based on comparison of obtained COI barcodes with those available for European species was done with the Neighbor-Joining method (Saitou and Nei 1987) under the Kimura 2-parameter substitution model (Kimura 1980) using the software MEGA11 (Tamura et al. 2021). All positions with less than 95% site coverage were eliminated, i.e., fewer than 5% alignment gaps, missing

data, and ambiguous bases were allowed at any position (partial deletion option). The barcode sequence of *Pseudopelecocera latifrons* (Loew, 1856) was included to root the tree. The identification of the obtained adult flies was confirmed using keys provided in Van Eck and Mengual (2021).

Digital images

Stacked images of specimen external morphology were taken with a Canon EOS 40S digital camera using d-cell software vs 5.1. Images were combined using Zerene stacker software vs. 2 based on 50-100 exposures of the subjects.

Data resources

Obtained specimens are deposited in the Entomological collections of the Finnish Museum of Natural History (MZH), and registered in the Collections Management System Kotka. The Finnish Museum of Natural History Luomus uses the CETAF stable identifier system based on http Unique Resource Identifiers (HTTP-URIs) for all collection objects. The specimen data is accessible through the Finnish Biodiversity Information Facility, as follows: the larvae of *Pelecocera* (*P.*) *tricinta* (<http://id.luomus.fi/GJ.6367> and <http://id.luomus.fi/GJ.6368>) and *Pelecocera* (*C.*) *caledonica* (<http://id.luomus.fi/GJ.6369>). The data for the obtained flies: <http://id.luomus.fi/GJ.6370> to <http://id.luomus.fi/GJ.6373>) and *Pelecocera* (*Chamaesyphus*) *caledonica* (<http://id.luomus.fi/GJ.6374> to <http://id.luomus.fi/GJ.6375>). New COI barcode sequences were submitted to GenBank under accession numbers OR941126-OR941128.

Results

Host fungus

The sporocarps or fruit bodies were readily identified as *Rhizopogon luteolus*. The sporocarps of *Rhizopogon luteolus* are 1.5-5 cm in diameter, without stem, variable in shape being roundish, ovoid or of irregular shape (Grubisha et al. 2002). The fruit bodies are initially yellow in colour (Fig. 1), but turning brownish-yellow upon maturity (Fig. 2). The outer skin is tough, and the inner tissue (gleba) is initially pale-yellow and solid, but becomes olive-brown and liquified in mature and senescent fruit bodies. *Rhizopogon luteolus* occurs throughout most of mainland Europe, but is common only in sandy soil pine-forested parts of northern Europe. In Finland the species is recorded up to the 68° latitude, and fruit bodies occur mainly in August and September (The Finnish Biodiversity Information Facility, <https://laji.fi/observation/list?target=MX.236304>).

DNA identification of larvae

MtDNA COI barcodes were obtained for three out of the seven tested larvae. The mtDNA COI sequence dataset used for tree-based identification included altogether 28 nucleotide sequences of *Pelecocera* spp. (GenBank accession numbers indicated in Fig. 4). The Neighbor-Joining analysis found the newly obtained COI barcodes to be identical with those of the species of *Pelecocera* (*Pelecocera*) *tricincta* and *Pelecocera* (*Chamaesyphus*) *caledonica*, respectively (Fig. 4). The COI barcode sequences for *P. tricincta* comprised 658 nucleotide and for *P. caledonica* 629 nucleotide positions, and the DNA sequence matrix comprised 658 positions (inserting ? for missing data). In the study of Lair et al. (2022) the authors noted that the COI barcodes of *Pelecocera pruinosomaculata* and *P. scaevoides* were resolved as intermixed in their tree, with a mean distance of 0.8% between the taxa. This study utilized part of the same sequences used in Lair et al. (2022) and uses the same taxon names, and also recovers the COI barcodes of mentioned taxa as clustering together (Fig. 4).

Discussion

Ecology and morphology of *Pelecocera* spp. larvae

Each mature *Rhizopogon luteolus* sporocarp which was taken from the field for rearing contained some *Pelecocera* spp. larvae. Okada et al. (2021) reported that the *Pelecocera japonica* larvae they found dwelled in the liquefied decaying inner tissue (gleba) of the specimens of *Rhizopogon* spp. The larvae of *P. tricincta* and *P. caledonica* here described from *Rhizopogon luteolus* fruit bodies were likewise only found in liquefied fungal tissue of olive-brown colour and with an oily viscosity. The larvae were submerged in the liquefied fungal tissue with their posterior respiratory tube (prp) thrust out of the material. The liquefied material did not fill the inner space of the sporocarp completely, leaving a non-filled small air space in the dorsal part (about 1/10th of the gleba volume). This agrees with description of Rotheray (1990) of *Cheilosia* larvae which develop in Boletaceae species. These larvae are also submerged in the decayed Boletaceae fungi of semi-liquid consistence with the prp out of the decayed material.

The mouth parts of the inspected third instar larvae of the *Pelecocera* spp. in this study agree with structures indicated for fungus feeding *Cheilosia* larvae (Rotheray 1990). These structures are a cephalopharyngeal skeleton with a small dorsal mouth-hook not protruding from the mouth and fleshy mandibular lobes, and a vestiture of the larvae consisting of rows of setae (Fig. 3). Images are provided for both *Pelecocera tricincta* (Fig. 5) and *Pelecocera caledonica* to illustrate the vestiture and other structures in the puparia (Fig. 6). A full description of the larvae and puparia for both *Pelecocera caledonica* and *P. tricincta* will be provided elsewhere (in prep.). Photos of the heads of the reared species are provided for morphological identification (Figs 7, 8).

Conservation aspects

Pennards (2020a) and Pennards (2020b) noted that *Pelecocera caledonica* and *P. tricineta* are broadly distributed in both northern and southern Europe. His Red list assessment indicated that potential conservation actions for the species should focus on the protection of the habitat where flies occur, but that the species are known to occur in both protected areas and in commercially harvested forests. I searched for False Truffles in Helsinki, Kallahdenniemi in September 2022, with no findings. Comparing monthly rainfalls of year 2022 and 2023, the monthly rainfalls were 2-3x higher for July, August and September in Helsinki in 2023 (Finnish Meteorological Institute <https://www.ilmatieteenlaitos.fi/>).

In September 2023 the Yellow False Truffles containing *Pelecocera* spp. larvae in the Kallahdenniemi recreational area were found immediately adjacent to footpaths between the public beach and car parking areas, and about 10 sporocarps were observed in total in a small area with about 2 m radius. The occurrence of fungi in general is partly dependent on amount of rainfall during the season, with the 2023 season receiving more rain in southern Finland, and many False Truffles were observed. The observed fruit bodies occurred in (late) autumn when the Kallahdenniemi area is less used by the broad public. It is not known to which extent human activities (e.g. trampling) could potentially affect the occurrence of the *Rhizopogon* fungi and any immediate conservation actions does therefore not seem warranted.

Conclusions

The findings of at least one specific host fungus species for *Pelecocera* (*Chamaesyphus*) *caledonica* and *Pelecocera* (*P.*) *tricincta* from northern Europe provides important information for the understanding of the ecology and conservation of the hoverfly species in question. Other *Rhizopogon* spp. sporocarps should be inspected for *Pelecocera* spp. larvae, for a more detailed picture of host fungus preferences for all *Pelecocera* species in Europe.

Acknowledgements

I thank Tea von Bonsdorff (Mycology, Finnish Museum of Natural History Luomus) for help with fungal identification, and Elvira Rättel (Entomology, Finnish Museum of Natural History Luomus) for help with the photography.

Conflicts of interest

The authors have declared that no competing interests exist.

References

- Binder M, Hibbett DS (2007) Molecular systematics and biological diversification of Boletales. *Mycologia* 98 (6): 971-981. <https://doi.org/10.3852/mycologia.98.6.971>
- Folmer O, Black M, Hoeh W, Lutz R, Vrijenhoek R (1994) DNA primers for amplification of mitochondrial cytochrome c oxidase subunit I from diverse metazoan invertebrates. *Molecular Marine Biology and Biotechnology* 3 (5): 294-299.
- Grubisha LC, Trappe JM, Molina R, Spatafora JW (2002) Biology of the ectomycorrhizal genus *Rhizopogon*. VI. Re-examination of infrageneric relationships inferred from phylogenetic analyses of ITS sequences". *Mycologia* 94 (4): 607-619. <https://doi.org/10.2307/3761712>
- Hebert PN, Cywinska A, Ball S, deWaard J (2003) Biological identifications through DNA barcodes. *Proceedings of the Royal Society of London, Series B: Biological Sciences* 270 (1512): 313-321. <https://doi.org/10.1098/rspb.2002.2218>
- Kimura M (1980) A simple method for estimating evolutionary rates of base substitutions through comparative studies of nucleotide sequences. *Journal of Molecular Evolution* 16 (2): 111-20. <https://doi.org/10.1007/BF01731581>
- Lair X, Ropars L, Skevington JH, Kelso S, Geslin B, Minssieux E, Nve G (2022) Revision of the genus *Pelecocera* Meigen, 1822 (Diptera: Syrphidae) from France: taxonomy, ecology and distribution. *Zootaxa* 5141 (1): 1-24. <https://doi.org/10.11646/zootaxa.5141.1.1>
- Molina R, Trappe JM (2006) Biology of the ectomycorrhizal genus, *Rhizopogon*. *New Phytologist* 126 (4): 653-675. <https://doi.org/10.1111/j.1469-8137.1994.tb02961.x>
- Nève G, Lair X (2023) Recherches taxonomiques sur les *Pelecocera* de France, avec discussion de leur répartition et écologie (Diptera, Syrphidae). *Bulletin de la Société Entomologique de France* 128 (3): 249-264. <https://doi.org/10.32475/bsef.2260>
- Okada H, Sueyoshi M, Suetsugu K (2021) Consumption of the ectomycorrhizal fungi *Rhizopogon roseolus* and *R. luteolus* by *Chamaesyrphus japonicus* (Diptera: Syrphidae). *Entomological Science* 24 (2): 123-126. <https://doi.org/10.1111/ens.12460>
- Pennards GW (2020a) *Pelecocera tricineta*: Pennards, G.W.A. IUCN Red List of Threatened Species <https://doi.org/10.2305/iucn.uk.2021-2.rlts.t149164876a149164878.en>
- Pennards GW (2020b) *Pelecocera caledonica*: Pennards, G.W.A. IUCN Red List of Threatened Species <https://doi.org/10.2305/iucn.uk.2021-2.rlts.t149169708a149169711.en>
- Rotheray G (1990) The relationship between feeding mode and morphology in *Cheilosia* larvae (Diptera, Syrphidae). *Journal of Natural History* 24 (1): 7-19. <https://doi.org/10.1080/00222939000770021>
- Saitou N, Nei M (1987) The neighbor-joining method: a new method for reconstructing phylogenetic trees. *Molecular Biology and Evolution* 4: 406-425. <https://doi.org/10.1093/oxfordjournals.molbev.a040454>
- Simon C, Frati F, Beckenbach A, Crespi B, Liu H, Flook P (1994) Evolution, weighting, and phylogenetic utility of mitochondrial gene sequences and a compilation of conserved polymerase chain reaction primers. *Annals of the Entomological Society of America* 87 (6): 651-701. <https://doi.org/10.1093/aesa/87.6.651>

- Skevington JH (2020) Nearctic Syrphidae Checklist. http://www.canacoll.org/Diptera/Staff/Skevington/Syrphidae/Syrphidae_Nearctic_Checklist.htm. Accessed on: 2023-9-08.
- Sonet G, Jordaens K, Braet Y, Bourguignon L, Dupont E, Backeljau T, de Meyer M, Desmyter S (2013) Utility of GenBank and the Barcode of Life Data Systems (BOLD) for the identification of forensically important Diptera from Belgium and France. *ZooKeys* 365: 307-328. <https://doi.org/10.3897/zookeys.365.6027>
- Speight MC (2020) Syrph the Net, the database of European Syrphidae (Diptera). Vol. 104. Syrph-the-Net Publications, Dublin, 314 pp.
- Stähls G, Miettinen O, Rättel E (2014) mtDNA COI in efficient use: clarifying taxonomy, linking morphologically discordant sexes and identifying the immature stages of *Agathomyia* Verrall flat-footed flies (Diptera: Platypezidae). *Journal of Zoological Systematics and Evolutionary Research* 53 (3): 219-238. <https://doi.org/10.1111/jzs.12091>
- Tamura K, Stecher G, Kumar S (2021) MEGA11: Molecular Evolutionary Genetics Analysis Version 11. *Molecular Biology and Evolution* 38 (7): 3022-3027. <https://doi.org/10.1093/molbev/msab120>
- Van Eck A, Mengual X (2021) Review of the genus *Pelecocera* Meigen, 1822 (Diptera, Syrphidae) in the Palaearctic with the description of a new species from Cyprus. *Beiträge zur Entomologie = Contributions to Entomology* 71 (2): 321-343. <https://doi.org/10.21248/contrib.entomol.71.2.321-343>
- Vujić A, Stähls G, Radenković S (2018) Hidden European diversity: a new monotypic hoverfly genus (Diptera: Syrphidae: Eristalinae: Rhingiini). *Zoological Journal of the Linnean Society* 185 (4): 1188-1211. <https://doi.org/10.1093/zoolinnean/zly066>



Figure 1.

Rhizopogon luteolus. Helsinki, Kallahdenniemi. Photo: Gunilla Ståhls.



Figure 2.

Rhizopogon luteolus. Helsinki, Kallahdenniemi. Photo: Gunilla Ståhls.



Figure 3.

Pelecocera spp. larva, lateral view. Photo: Elvira Rättel and Gunilla Ståhls.

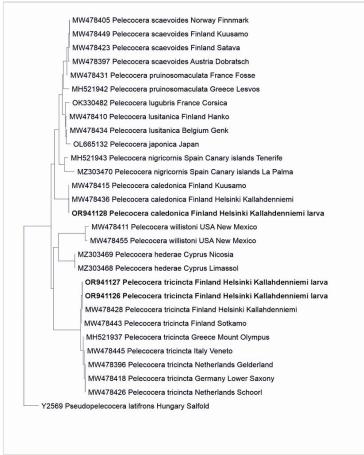


Figure 4.

Tree based identification using Neighbor-Joining tree of COI barcode sequences. Sequences of all species samples are labelled with their GenBank accession number and provenance. Newly obtained sequences are in boldface.



Figure 5.

Pelecocera tricineta, empty puparium in dorsal view. Photo: Elvira Rättel and Gunilla Ståhls.



Figure 6.

Pelecocera caledonica, empty puparium in dorsal view. Photo: Elvira Rättel and Gunilla Ståhls.



Figure 7.

Pelecocera tricinta, male head in anterior view. Photo: Elvira Rättel and Gunilla Ståhls.



Figure 8.

Pelecocera caledonica, female head. Photo: Elvira Rättel and Gunilla Ståhls.